



## SUNNYSIDE COAL MINE – MONTHLY MONITORING SUMMARY

### Site Information

**EPL No:** 12957

**EPA Website Link:** <http://epa.nsw.gov.au/prpoeoapp/ViewPOEOLicence.aspx?DOCID=40292&SYSUID=1&LICID=12957>

**Licensee:** Namoi Mining Pty Ltd

**Licensee Address:** Sunnyside Coal Project, 259 Coocooboona Lane, GUNNEDAH NSW 2380

**EPL Monitoring Points:** See Figure 1 below

**Sampling Period:** January 2019

**Obtained Date:** 6<sup>th</sup> February 2019

**Publication Date:** 6<sup>th</sup> February 2019

**Table 1 - No Pollutant Limits Apply**

EPL ID	Pollutant	Units of Measure	Monitoring Frequency	No. of Samples for the Month	Date(s) Sampled	Date(s) Obtained	Min Value	Mean Value	Median Value	Max or Only Value
1	Particulates-Deposited Matter	g/m <sup>2</sup> /month	Continuous	1	16/11/18	18/12/18	-	-	-	3.4
2	Particulates-Deposited Matter	g/m <sup>2</sup> /month	Continuous	1	16/11/18	18/12/18	-	-	-	4.2
4	Particulates-Deposited Matter	g/m <sup>2</sup> /month	Continuous	1	16/11/18	18/12/18	-	-	-	4.7
5	Particulates-Deposited Matter	g/m <sup>2</sup> /month	Continuous	1	16/11/18	18/12/18	-	-	-	5.2
6	Particulates-Deposited Matter	g/m <sup>2</sup> /month	Continuous	1	16/11/18	18/12/18	-	-	-	4.1
7	PM <sub>10</sub>	µg/m <sup>3</sup>	Every 6 days	5	Various	11/01/19	27.1	39.8	28.6	39.8
9	Conductivity	µS/cm	Special Frequency 1*	-	-	-	-	-	-	-
	Total organic carbon	mg/L					-	-	-	-
10	Conductivity	µS/cm		-	-	-	-	-	-	-



## SUNNYSIDE COAL MINE – MONTHLY MONITORING SUMMARY

EPL ID	Pollutant	Units of Measure	Monitoring Frequency	No. of Samples for the Month	Date(s) Sampled	Date(s) Obtained	Min Value	Mean Value	Median Value	Max or Only Value
	Total organic carbon	mg/L	Special Frequency 1*				-	-	-	-
11	TSS	mg/L	Special Frequency 2**	-			-	-	-	-
	Conductivity	µS/cm		-			-	-	-	
	Oil & Grease	mg/L		-			-	-	-	
	pH	pH		-			-	-	-	
	Total organic carbon	mg/L		-			-	-	-	
12	TSS	mg/L	Special Frequency 2**	-			-	-	-	-
	Conductivity	µS /cm		-			-	-	-	
	Oil & Grease	mg/L		-			-	-	-	
	pH	pH		-			-	-	-	
	Total organic carbon	mg/L		-			-	-	-	

**Table 2 - Pollutant Limits Apply**

EPL ID	Pollutant	Units of Measure	Monitoring Frequency	No. of Samples for the Month	Date Sampled	Date Obtained	Min Value	Max Value	100%ile Limit	Exceedance (Yes/No)	Comments
9	TSS	mg/L	Special Frequency 1*	0			-	-	50	-	No discharge
	Oil & Grease	mg/L		0			-	-	10	-	No discharge
	pH	pH		0			-	-	6.5-8.5	-	No discharge
10	TSS	mg/L	Special Frequency 1*	0			-	-	50	-	No discharge
	Oil & Grease	mg/L		0			-	-	10	-	No discharge
	pH	pH		0			-	-	6.5-8.5	-	No discharge

\* Special Frequency 1 means the collection of samples as soon as practicable after each discharge commences and in any case not more than 12 hours after each discharge commences.



## SUNNYSIDE COAL MINE – MONTHLY MONITORING SUMMARY

\*\* Special Frequency 2 means collection of samples quarterly (in the event of flow during the quarter) at a time when there is flow and as soon as practicable after each wet weather discharge from points 9 and 10 commences and in any case not more than 12 hours after each discharge commences.

**Table 3- Noise Monitoring (Noise limits apply)**

EPL ID	Date	Start Time	Measurement Period	Measured Levels – dB(A)	Measured Levels – dB(A)	Limit	Wind speed/ direction	Compliant (Yes/No)	Comments
				Leq 15min Day	Leq 15min Evening				
13			90min			35 dB(A) Leq (15 min)			
			30min						
			90min						
			30min						
			90min						
			30min						
14			90min			35 dB(A) Leq (15 min)			
			30min						
			90min						
			30min						
			90min						
			30min						
15			90min			35 dB(A) Leq (15 min)			
			30min						
			90min						
			30min						
			90min						
			30min						
16			90min						

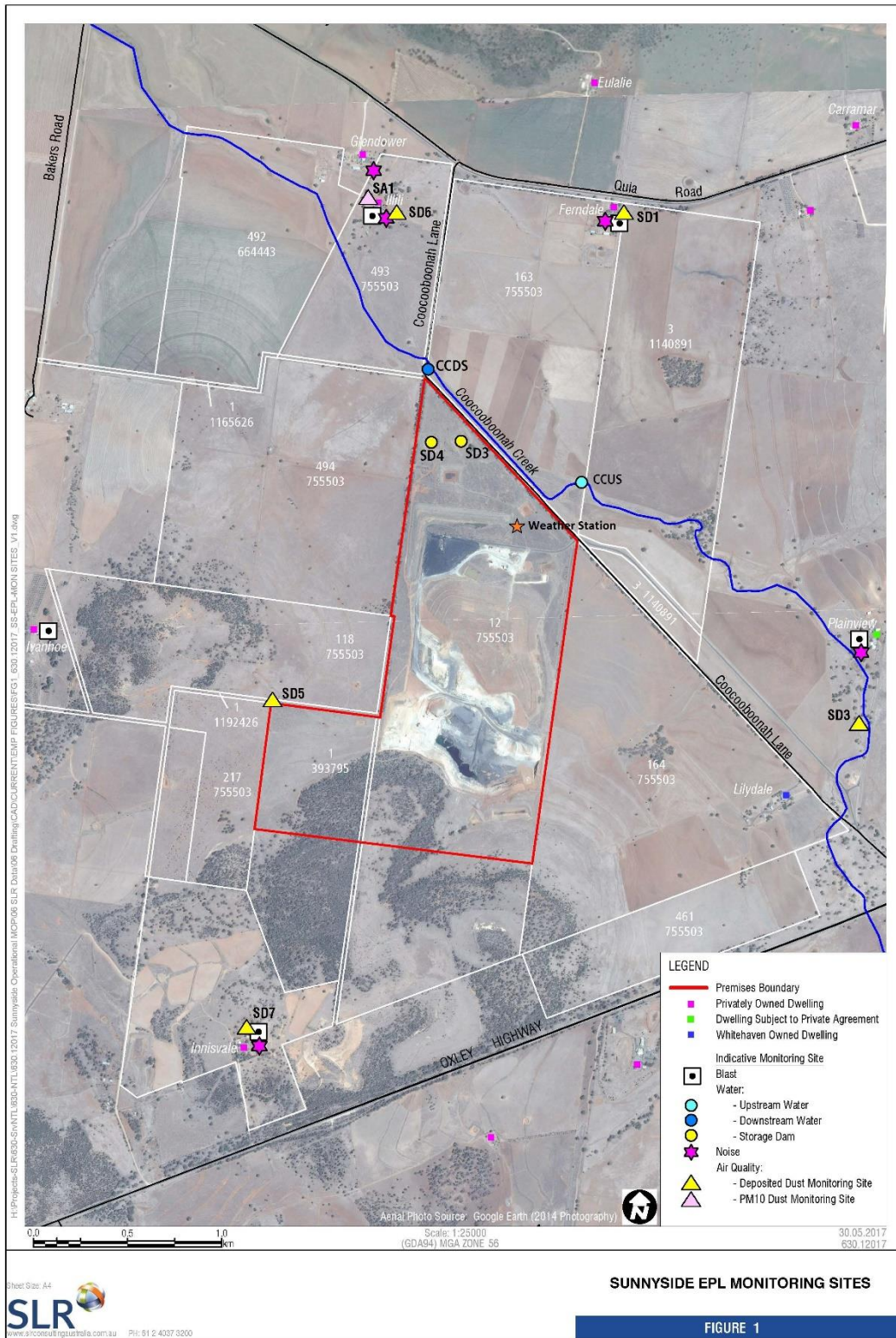
## SUNNYSIDE COAL MINE – MONTHLY MONITORING SUMMARY

17		30min		35 dB(A) Leq (15 min)			
		90min					
		30min					
		90min					
		30min					
		90min		35 dB(A) Leq (15 min)			
		30min					
		90min					
		30min					
		90min					

**Table 4 – Monitoring (Blasts – Limits Apply)**

Location	Parameter	Units of Measure	Frequency	No. of Blasts for the Month	Average Value	Max or Only Value	100%ile Limit	(Potential) Non-compliance/breach
19	Blast Noise	dB (Lin Peak)	Every Blast	2	98	106	120	No
	Blast Vibration	mm/s			0.425	0.54	10	No
20	Blast Noise	dB (Lin Peak)	Every Blast	2	96.05	103	120	No
	Blast Vibration	mm/s			0.69	0.74	10	No
23	Blast Noise	dB (Lin Peak)	Every Blast	2	109.55	114.2	120	No
	Blast Vibration	mm/s			0.91	1.55	10	No
24	Blast Noise	dB (Lin Peak)	Every Blast	2	105.9	111.6	120	No
	Blast Vibration	mm/s			0.49	0.55	10	No
26	Blast Noise	dB (Lin Peak)	Every Blast	2	97.1	102	120	No
	Blast Vibration	mm/s			1.37	1.85	10	No

Figure 1 – EPL 12957 Monitoring Locations





## SUNNYSIDE COAL MINE – MONTHLY MONITORING SUMMARY

### Site Information

**EPL No:** 12957

**EPA Website Link:** <http://epa.nsw.gov.au/prpoeoapp/ViewPOEOLicence.aspx?DOCID=40292&SYSUID=1&LICID=12957>

**Licensee:** Namoi Mining Pty Ltd

**Licensee Address:** Sunnyside Coal Project, 259 Coocooboona Lane, GUNNEDAH NSW 2380

**EPL Monitoring Points:** See Figure 1 below

**Sampling Period:** February 2019

**Obtained Date:** 22<sup>th</sup> March 2019

**Publication Date:** 22<sup>th</sup> March 2019

**Table 1 - No Pollutant Limits Apply**

EPL ID	Pollutant	Units of Measure	Monitoring Frequency	No. of Samples for the Month	Date(s) Sampled	Date(s) Obtained	Min Value	Mean Value	Median Value	Max or Only Value
1	Particulates-Deposited Matter	g/m <sup>2</sup> /month	Continuous	1	16/11/18	18/12/18	-	-	-	1.5
2	Particulates-Deposited Matter	g/m <sup>2</sup> /month	Continuous	1	16/11/18	18/12/18	-	-	-	1.2
4	Particulates-Deposited Matter	g/m <sup>2</sup> /month	Continuous	1	16/11/18	18/12/18	-	-	-	1.5
5	Particulates-Deposited Matter	g/m <sup>2</sup> /month	Continuous	1	16/11/18	18/12/18	-	-	-	2.1
6	Particulates-Deposited Matter	g/m <sup>2</sup> /month	Continuous	1	16/11/18	18/12/18	-	-	-	2.0
7	PM <sub>10</sub>	µg/m <sup>3</sup>	Every 6 days	5	Various	11/01/19	27.1	30.46	28.6	39.8
9	Conductivity	µS/cm	Special Frequency 1*	-	-	-	-	-	-	-
	Total organic carbon	mg/L					-	-	-	-
10	Conductivity	µS/cm		-	-	-	-	-	-	-

## SUNNYSIDE COAL MINE – MONTHLY MONITORING SUMMARY

EPL ID	Pollutant	Units of Measure	Monitoring Frequency	No. of Samples for the Month	Date(s) Sampled	Date(s) Obtained	Min Value	Mean Value	Median Value	Max or Only Value
	Total organic carbon	mg/L	Special Frequency 1*				-	-	-	-
11	TSS	mg/L	Special Frequency 2**	-	-	-	-	-	-	-
	Conductivity	µS/cm		-			-	-	-	
	Oil & Grease	mg/L		-			-	-	-	
	pH	pH		-			-	-	-	
	Total organic carbon	mg/L		-			-	-	-	
12	TSS	mg/L	Special Frequency 2**	-	-	-	-	-	-	-
	Conductivity	µS/cm		-			-	-	-	
	Oil & Grease	mg/L		-			-	-	-	
	pH	pH		-			-	-	-	
	Total organic carbon	mg/L		-			-	-	-	

**Table 2 - Pollutant Limits Apply**

EPL ID	Pollutant	Units of Measure	Monitoring Frequency	No. of Samples for the Month	Date Sampled	Date Obtained	Min Value	Max Value	100%ile Limit	Exceedance (Yes/No)	Comments
9	TSS	mg/L	Special Frequency 1*	0	-	-	-	-	50	-	No discharge
	Oil & Grease	mg/L		0			-	-	10	-	No discharge
	pH	pH		0			-	-	6.5-8.5	-	No discharge
10	TSS	mg/L	Special Frequency 1*	0	-	-	-	-	50	-	No discharge
	Oil & Grease	mg/L		0			-	-	10	-	No discharge
	pH	pH		0			-	-	6.5-8.5	-	No discharge

\* Special Frequency 1 means the collection of samples as soon as practicable after each discharge commences and in any case not more than 12 hours after each discharge commences.

**SUNNYSIDE COAL MINE – MONTHLY MONITORING SUMMARY**

\*\* Special Frequency 2 means collection of samples quarterly (in the event of flow during the quarter) at a time when there is flow and as soon as practicable after each wet weather discharge from points 9 and 10 commences and in any case not more than 12 hours after each discharge commences.

**Table 3- Noise Monitoring (Noise limits apply)**

EPL ID	Date	Start Time	Measurement Period	Measured Levels – dB(A) Leq 15min Day	Measured Levels – dB(A) Leq 15min Evening	Limit	Wind speed/ direction	Compliant (Yes/No)	Comments
13	26/02/2019	9:18	90min	I/A		35 dB(A) Leq (15 min)	E/ENE 3.3 m/s	Yes	Inaudible
		18:54	30min		I/A		E/ESE 1.9 m/s	Yes	Inaudible
	27/02/2019	7:09	90min	35			E/ESE 3.3 m/s	Yes	General mine activities 28-30 Haul Truck Engine Revs 34-47
		18:03	30min		I/A		E/ENE 5.3 m/s	Yes	Inaudible
	28/02/2019	9:05	90min	I/A			E/ENE 4.1 m/s	Yes	Inaudible
		18:49	30min		I/A		ESE 4.6 m/s	Yes	Inaudible
14	26/02/2019	07:25	90min	28		35 dB(A) Leq (15 min)	E/ENE, 4.1 m/s	Yes	Dozer operation 28-34
		19:34	30min		I/A		ESE. 1.5m/s	Yes	Inaudible
	27/02/2019	8:59	90min	N/M			E/ENE 3.5 m/s	Yes	General mine activities Barely Audible
		16:44	30min		I/A		E/ENE 7.5 m/s	Yes	Inaudible
	28/02/2019	7:26	90min	29			E/ENE 4.1 m/s	Yes	Dozer operation 30-33 General mine operations 28-32 Haul trucks 31-36
		19:28	30min		I/A		ESE 4.2 m/s	Yes	Inaudible
15	26/02/2019	11:49	90min	27		35 dB(A) Leq (15 min)	S/SSW 3.9 m/s	Yes	General mine activity 24-32
		19:52	30min		I/A		E 2 m/s	Yes	Inaudible
	27/02/2019	11:43	90min	30			W-NW 4.7 m/s	Yes	General mine activity 28-41
		19:30	30min		I/A		ENE 6 m/s	Yes	Inaudible
	28/02/2019	10:59	90min	I/A			N/NNE 4.2 m/s	Yes	General mine activity barely audible



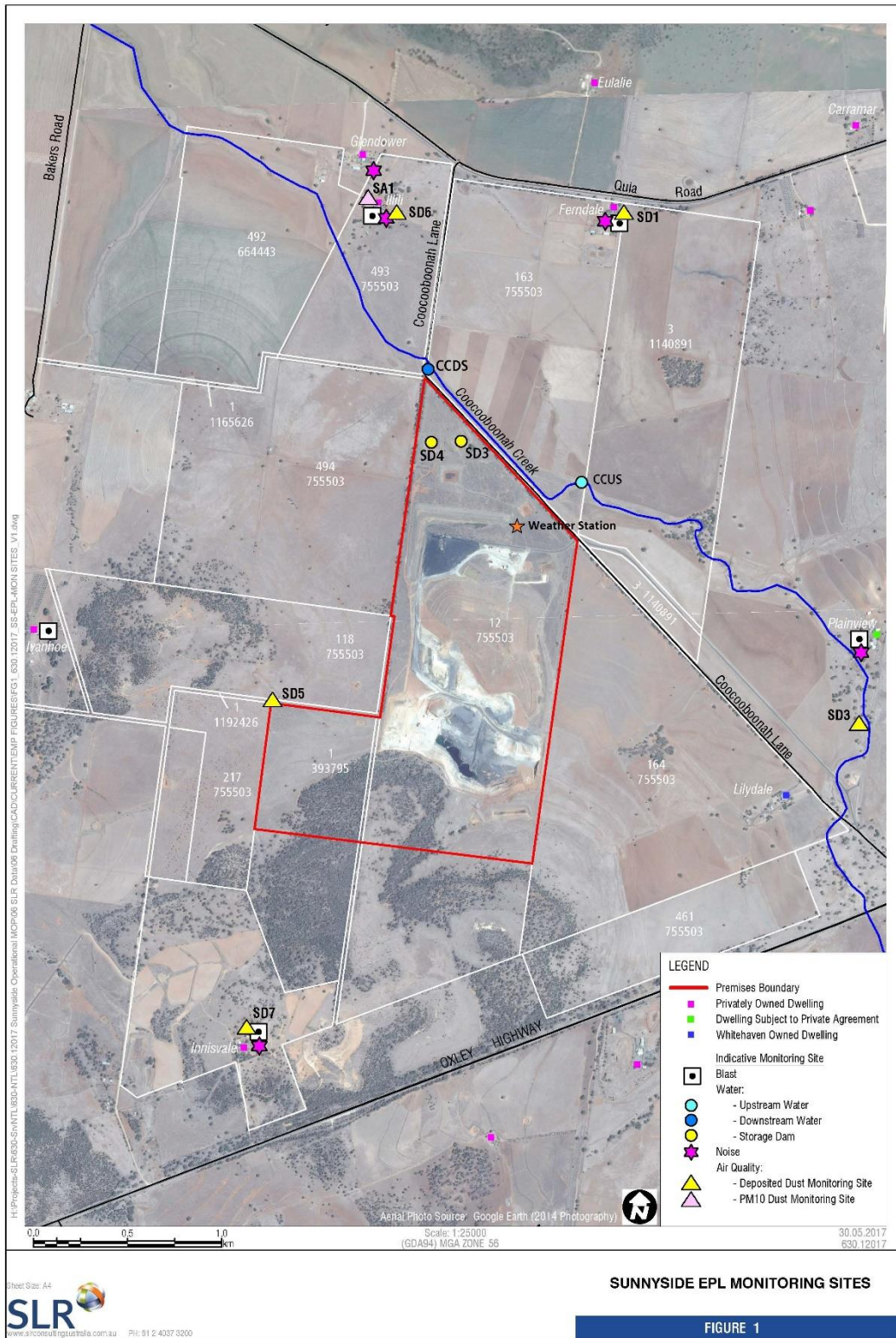
## SUNNYSIDE COAL MINE – MONTHLY MONITORING SUMMARY

Location	Date	Time	Duration	Blast Count	Notes	Monitoring Data			
						35 dB(A) Leq (15 min)	Wind Speed	Compliance	Notes
16	26/02/2019	19:26	30min	I/A		ESE 4.5 m/s	Yes	Inaudible	
		11:27	90min	I/A		3.1 m/s N-SW	Yes	Not Measurable	
	27/02/2019	20:24	30min	I/A		2.1 m/s E/SE	Yes	Inaudible	
		11:06	90min	I/A		4.5 m/s	Yes	Inaudible	
	28/02/2019	19:34	30min	I/A		6.8 m/s	Yes	Inaudible	
		07:16	90min	28		4.1 m/s E/ENE	Yes	General mine activity 27-30 Haul truck 29-31	
	17	26/02/2019	16:01	30min	I/A		5.2 m/s E/ESE	Yes	Inaudible
			09:26	90min	I/A		3.7 m/s E/EWE	Yes	General Mine activity barely audible
27/02/2019		19:05	30min	I/A		2.3 m/s ESE	Yes	Inaudible	
		09:24	90min	I/A		4.2 m/s NE/ESE	Yes	General Mine activity barely audible	
28/02/2019		18:46	30min	I/A		7.5 m/s ENE	Yes	Inaudible	
		08:50	90min	I/A		4.1 m/s E/ENE	Yes	Inaudible	
28/02/2019		18:44	30min	I/A		4.6 m/s ESE	Yes	Inaudible	

**Table 4 – Monitoring (Blasts – Limits Apply)**

Location	Parameter	Units of Measure	Frequency	No. of Blasts for the Month	Average Value	Max or Only Value	100%ile Limit	(Potential) Non-compliance/breach
19	Blast Noise	dB (Lin Peak)	Every Blast	0				
	Blast Vibration	mm/s						
20	Blast Noise	dB (Lin Peak)	Every Blast	0				
	Blast Vibration	mm/s						
23	Blast Noise	dB (Lin Peak)	Every Blast	0				
	Blast Vibration	mm/s						
24	Blast Noise	dB (Lin Peak)	Every Blast	0				
	Blast Vibration	mm/s						
26	Blast Noise	dB (Lin Peak)	Every Blast	0				
	Blast Vibration	mm/s						

**Figure 1 – EPL 12957 Monitoring Locations**



## SUNNYSIDE COAL MINE – MONTHLY MONITORING SUMMARY

### Site Information

**EPL No:** 12957

**EPA Website Link:** <http://epa.nsw.gov.au/prpoeoapp/ViewPOEOLicence.aspx?DOCID=40292&SYSUID=1&LICID=12957>

**Licensee:** Namoi Mining Pty Ltd

**Licensee Address:** Sunnyside Coal Project, 259 Coocooboona Lane, GUNNEDAH NSW 2380

**EPL Monitoring Points:** See Figure 1 below

**Sampling Period:** March 2019

**Obtained Date:** 09<sup>th</sup> April 2019

**Publication Date:** 16<sup>th</sup> April 2019

**Table 1 - No Pollutant Limits Apply**

EPL ID	Pollutant	Units of Measure	Monitoring Frequency	No. of Samples for the Month	Date(s) Sampled	Date(s) Obtained	Min Value	Mean Value	Median Value	Max or Only Value
1	Particulates-Deposited Matter	g/m <sup>2</sup> /month	Continuous	1	20/03/19	09/04/19	-	-	-	2.4
2	Particulates-Deposited Matter	g/m <sup>2</sup> /month	Continuous	1	20/03/19	09/04/19	-	-	-	1.2
4	Particulates-Deposited Matter	g/m <sup>2</sup> /month	Continuous	1	20/03/19	09/04/19	-	-	-	1.5
5	Particulates-Deposited Matter	g/m <sup>2</sup> /month	Continuous	1	20/03/19	09/04/19	-	-	-	6.9
6	Particulates-Deposited Matter	g/m <sup>2</sup> /month	Continuous	1	20/03/19	09/04/19	-	-	-	2.4
7	PM <sub>10</sub>	µg/m <sup>3</sup>	Every 6 days	5	Various	11/01/19	14.8	34.08	25.1	69.1
9	Conductivity	µS/cm	Special Frequency 1*	1	-	-	-	-	-	-
	Total organic carbon	mg/L					-	-	-	-
10	Conductivity	µS/cm		-	-	-	-	-	-	-

## SUNNYSIDE COAL MINE – MONTHLY MONITORING SUMMARY

EPL ID	Pollutant	Units of Measure	Monitoring Frequency	No. of Samples for the Month	Date(s) Sampled	Date(s) Obtained	Min Value	Mean Value	Median Value	Max or Only Value
	Total organic carbon	mg/L	Special Frequency 1*				-	-	-	-
11	TSS	mg/L	Special Frequency 2**	-	-	-	-	-	-	-
	Conductivity	µS/cm		-			-	-	-	
	Oil & Grease	mg/L		-			-	-	-	
	pH	pH		-			-	-	-	
	Total organic carbon	mg/L		-			-	-	-	
12	TSS	mg/L	Special Frequency 2**	-	-	-	-	-	-	-
	Conductivity	µS/cm		-			-	-	-	
	Oil & Grease	mg/L		-			-	-	-	
	pH	pH		-			-	-	-	
	Total organic carbon	mg/L		-			-	-	-	

**Table 2 - Pollutant Limits Apply**

EPL ID	Pollutant	Units of Measure	Monitoring Frequency	No. of Samples for the Month	Date Sampled	Date Obtained	Min Value	Max Value	100%ile Limit	Exceedance (Yes/No)	Comments
9	TSS	mg/L	Special Frequency 1*	0	-	-	-	-	50	-	No discharge
	Oil & Grease	mg/L		0			-	-	10	-	No discharge
	pH	pH		0			-	-	6.5-8.5	-	No discharge
10	TSS	mg/L	Special Frequency 1*	0	-	-	-	-	50	-	No discharge
	Oil & Grease	mg/L		0			-	-	10	-	No discharge
	pH	pH		0			-	-	6.5-8.5	-	No discharge

\* Special Frequency 1 means the collection of samples as soon as practicable after each discharge commences and in any case not more than 12 hours after each discharge commences.

**SUNNYSIDE COAL MINE – MONTHLY MONITORING SUMMARY**

\*\* Special Frequency 2 means collection of samples quarterly (in the event of flow during the quarter) at a time when there is flow and as soon as practicable after each wet weather discharge from points 9 and 10 commences and in any case not more than 12 hours after each discharge commences.

**Table 3- Noise Monitoring (Noise limits apply)**

EPL ID	Date	Start Time	Measurement Period	Measured Levels – dB(A)	Measured Levels – dB(A)	Limit	Wind speed/ direction	Compliant (Yes/No)	Comments
				Leq 15min Day	Leq 15min Evening				
13			90min			35 dB(A) Leq (15 min)			
			30min						
			90min						
			30min						
			90min						
			30min						
14			90min			35 dB(A) Leq (15 min)			
			30min						
			90min						
			30min						
			90min						
			30min						
15			90min			35 dB(A) Leq (15 min)			
			30min						
			90min						
			30min						
		90min							
		30min			I/A				
16			90min						

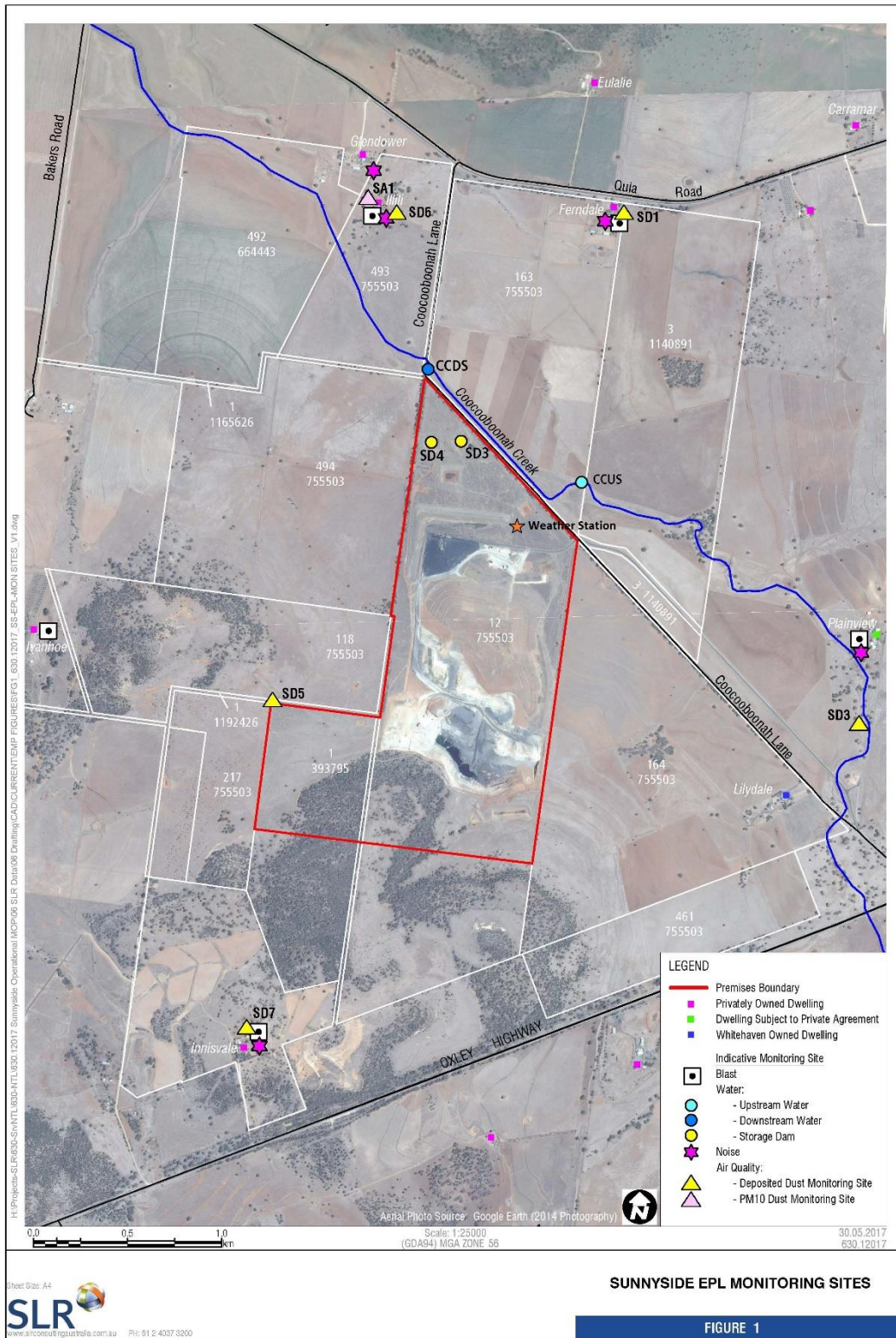
**SUNNYSIDE COAL MINE – MONTHLY MONITORING SUMMARY**

17		30min		35 dB(A) Leq (15 min)			
		90min					
		30min					
		90min					
		30min					
		90min		35 dB(A) Leq (15 min)			
		30min					
		90min					
		30min					
		90min					

**Table 4 – Monitoring (Blasts – Limits Apply)**

Location	Parameter	Units of Measure	Frequency	No. of Blasts for the Month	Average Value	Max or Only Value	100%ile Limit	(Potential) Non-compliance/breach
19	Blast Noise	dB (Lin Peak)	Every Blast	0				No blast in March
	Blast Vibration	mm/s						
20	Blast Noise	dB (Lin Peak)	Every Blast	0				
	Blast Vibration	mm/s						
23	Blast Noise	dB (Lin Peak)	Every Blast	0				
	Blast Vibration	mm/s						
24	Blast Noise	dB (Lin Peak)	Every Blast	0				
	Blast Vibration	mm/s						
26	Blast Noise	dB (Lin Peak)	Every Blast	0				
	Blast Vibration	mm/s						

Figure 1 – EPL 12957 Monitoring Locations



## SUNNYSIDE COAL MINE – MONTHLY MONITORING SUMMARY

### Site Information

**EPL No:** 12957

**EPA Website Link:** <http://epa.nsw.gov.au/prpoeoapp/ViewPOEOLicence.aspx?DOCID=40292&SYSUID=1&LICID=12957>

**Licensee:** Namoi Mining Pty Ltd

**Licensee Address:** Sunnyside Coal Project, 259 Coocooboona Lane, GUNNEDAH NSW 2380

**EPL Monitoring Points:** See Figure 1 below

**Sampling Period:** April 2019

**Obtained Date:** 12<sup>th</sup> April 2019

**Publication Date:** 15<sup>th</sup> May 2019

**Table 1 - No Pollutant Limits Apply**

EPL ID	Pollutant	Units of Measure	Monitoring Frequency	No. of Samples for the Month	Date(s) Sampled	Date(s) Obtained	Min Value	Mean Value	Median Value	Max or Only Value
1	Particulates-Deposited Matter	g/m <sup>2</sup> /month	Continuous	1	17/04/19	02/05/19	-	-	-	3.9
2	Particulates-Deposited Matter	g/m <sup>2</sup> /month	Continuous	1	17/04/19	02/05/19	-	-	-	3.7
4	Particulates-Deposited Matter	g/m <sup>2</sup> /month	Continuous	1	17/04/19	02/05/19	-	-	-	1.5
5	Particulates-Deposited Matter	g/m <sup>2</sup> /month	Continuous	1	17/04/19	02/05/19	-	-	-	2.4
6	Particulates-Deposited Matter	g/m <sup>2</sup> /month	Continuous	1	17/04/19	02/05/19	-	-	-	1.6
7	PM <sub>10</sub>	µg/m <sup>3</sup>	Every 6 days	4	Various	03/05/19	15.3	23.57	25.90	27.2
9	Conductivity	µS/cm	Special Frequency 1*	1	-	-	-	-	-	-
	Total organic carbon	mg/L					-	-	-	-
10	Conductivity	µS/cm		-	-	-	-	-	-	-





**SUNNYSIDE COAL MINE – MONTHLY MONITORING SUMMARY**

EPL ID	Pollutant	Units of Measure	Monitoring Frequency	No. of Samples for the Month	Date(s) Sampled	Date(s) Obtained	Min Value	Mean Value	Median Value	Max or Only Value
	Total organic carbon	mg/L	Special Frequency 1*				-	-	-	-
11	TSS	mg/L	Special Frequency 2**	-			-	-	-	-
	Conductivity	µS/cm		-			-	-	-	
	Oil & Grease	mg/L		-			-	-	-	
	pH	pH		-			-	-	-	
	Total organic carbon	mg/L		-			-	-	-	
12	TSS	mg/L	Special Frequency 2**	-			-	-	-	-
	Conductivity	µS/cm		-			-	-	-	
	Oil & Grease	mg/L		-			-	-	-	
	pH	pH		-			-	-	-	
	Total organic carbon	mg/L		-			-	-	-	

**Table 2 - Pollutant Limits Apply**

EPL ID	Pollutant	Units of Measure	Monitoring Frequency	No. of Samples for the Month	Date Sampled	Date Obtained	Min Value	Max Value	100%ile Limit	Exceedance (Yes/No)	Comments
9	TSS	mg/L	Special Frequency 1*	0			-	-	50	-	No discharge
	Oil & Grease	mg/L		0			-	-	10	-	No discharge
	pH	pH		0			-	-	6.5-8.5	-	No discharge
10	TSS	mg/L	Special Frequency 1*	0			-	-	50	-	No discharge
	Oil & Grease	mg/L		0			-	-	10	-	No discharge
	pH	pH		0			-	-	6.5-8.5	-	No discharge

\* Special Frequency 1 means the collection of samples as soon as practicable after each discharge commences and in any case not more than 12 hours after each discharge commences.

**SUNNYSIDE COAL MINE – MONTHLY MONITORING SUMMARY**

\*\* Special Frequency 2 means collection of samples quarterly (in the event of flow during the quarter) at a time when there is flow and as soon as practicable after each wet weather discharge from points 9 and 10 commences and in any case not more than 12 hours after each discharge commences.

**Table 3- Noise Monitoring (Noise limits apply)**

EPL ID	Date	Start Time	Measurement Period	Measured Levels – dB(A)	Measured Levels – dB(A)	Limit	Wind speed/ direction	Compliant (Yes/No)	Comments
				Leq 15min Day	Leq 15min Evening				
13	26/02/2019	09:18	90min	I/A		35 dB(A) Leq (15 min)	0.8 – 3.3 m/s E/ENE	Y	
		18:54	30min		I/A		1.7 - 1.9 m/s E/ESE	Y	
	27/02/2019	07:09	90min	35			1 – 3.3 m/s E/ESE	Y	
		18:03	30min		I/A		4.2 – 5.3 m/s E/ENE	Y	
	28/02/2019	09:05	90min	I/A			3 – 4.1 m/s E/ENE	Y	
		18:49	30min		I/A		4.3 – 4.6 m/s ESE	Y	
14	26/02/2019	07:25	90min	N/M		35 dB(A) Leq (15 min)	2.9 – 4.1 m/s E/ENE	Y	
		19:34	30min		28		1.1 – 1.5 m/s ESE	Y	
	27/02/2019	08:59	90min	N/M			2.5 – 3.5 m/s E/ENE	Y	
		16:44	30min		I/A		4.1 – 7.5 m/s E/ENE	Y	
	28/02/2019	07:26	90min	I/A			2.5 – 4.1 m/s E/ENE	Y	
		19:28	30min		I/A		3.1 -4.2 m/s ESE	Y	
15	26/02/2019	11:49	90min	25		35 dB(A) Leq (15 min)	0.5 – 3.9 m/s S/SSW	Y	
		19:52	30min		I/A		19:52 1.6 – 2 m/s E	Y	
	27/02/2019	11:43	90min	30			0.7 – 4.7 m/s W-NW	Y	
		19:30	30min		I/A		5.4 - 6 m/s ENE	Y	

## SUNNYSIDE COAL MINE – MONTHLY MONITORING SUMMARY

	28/02/2019	10:59	90min	I/A			2 – 4.2 m/s N/NNE	Y	
	28/02/2019	19:26	30min		I/A		3.1 – 4.5 m/s ESE	Y	
16	26/02/2019	11:27	90min	I/A			0.6 – 3.1 m/s N-SW	Y	
		20:24	30min		I/A		1.3 – 2.1 m/s E/SE	Y	
	27/02/2019	11:06	90min	I/A I/A			E/ENE 28-30 °C	Y	
		19:34	30min		I/A		ENE 28-29 °C	Y	
	28/02/2019	07:16	90min	28			2.5 – 4.1 m/s E/ENE	Y	
		16:01	30min		I/A		2.5 – 4.1 m/s E/ENE	Y	
17	26/02/2019	09:26	90min	N/M			1.1 – 3.7 m/s NE/EWE	Y	
		19:05	30min		I/A		1.2 – 2.3 m/s ESE	Y	
	27/02/2019	09:24	90min	I/A			2.5 – 4.2 m/s ENE/ESE	Y	
		18:46	30min		I/A		4.1 - 7.5 m/s ENE	Y	
	28/02/2019	08:50	90min	I/A			3.2 – 4.1 m/s E/ENE	Y	
		18:44	30min		I/A		4.2 – 4.6 m/s ESE	Y	

**Table 4 – Monitoring (Blasts – Limits Apply)**

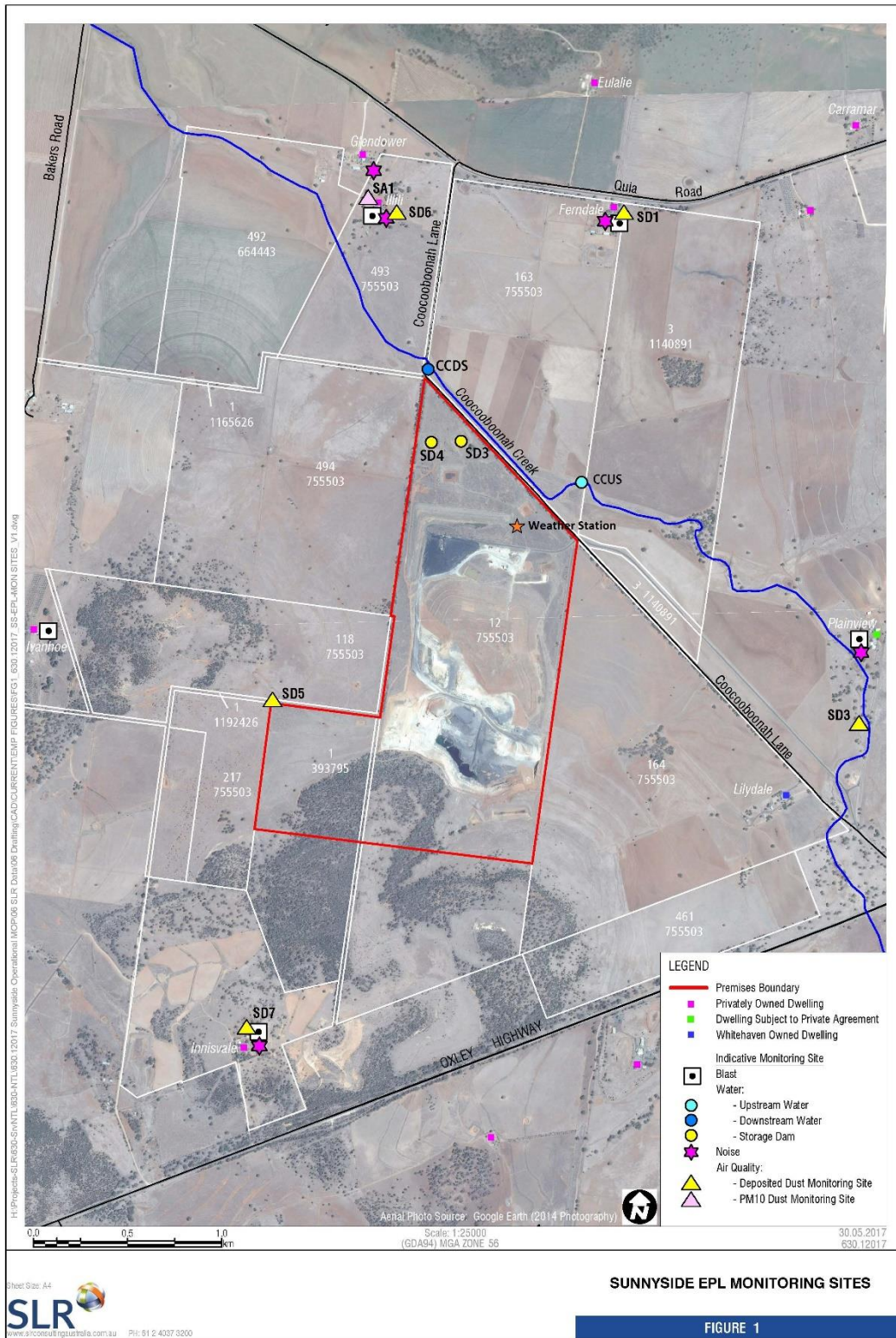
Location	Parameter	Units of Measure	Frequency	No. of Blasts for the Month	Average Value	Max or Only Value	100%ile Limit	(Potential) Non-compliance/breach
19	Blast Noise	dB (Lin Peak)	Every Blast	0				No blast in March
	Blast Vibration	mm/s						
20	Blast Noise	dB (Lin Peak)	Every Blast	0				
	Blast Vibration	mm/s						



**SUNNYSIDE COAL MINE – MONTHLY MONITORING SUMMARY**

23	Blast Noise	dB (Lin Peak)	Every Blast	0				
	Blast Vibration	mm/s						
24	Blast Noise	dB (Lin Peak)	Every Blast	0				
	Blast Vibration	mm/s						
26	Blast Noise	dB (Lin Peak)	Every Blast	0				
	Blast Vibration	mm/s						

**Figure 1 – EPL 12957 Monitoring Locations**



## SUNNYSIDE COAL MINE – MONTHLY MONITORING SUMMARY

### Site Information

**EPL No:** 12957

**EPA Website Link:** <http://epa.nsw.gov.au/prpoeoapp/ViewPOEOLicence.aspx?DOCID=40292&SYSUID=1&LICID=12957>

**Licensee:** Namoi Mining Pty Ltd

**Licensee Address:** Sunnyside Coal Project, 259 Coocooboona Lane, GUNNEDAH NSW 2380

**EPL Monitoring Points:** See Figure 1 below

**Sampling Period:** May 2019

**Obtained Date:** 31 May 2019

**Publication Date:** 31 May 2019

**Table 1 - No Pollutant Limits Apply**

EPL ID	Pollutant	Units of Measure	Monitoring Frequency	No. of Samples for the Month	Date(s) Sampled	Date(s) Obtained	Min Value	Mean Value	Median Value	Max or Only Value
1	Particulates-Deposited Matter	g/m <sup>2</sup> /month	Continuous	1	17/05/19	31/05/19	-	-	-	6.0
2	Particulates-Deposited Matter	g/m <sup>2</sup> /month	Continuous	1	17/05/19	31/05/19	-	-	-	2.9
4	Particulates-Deposited Matter	g/m <sup>2</sup> /month	Continuous	1	17/05/19	31/05/19	-	-	-	3.9
5	Particulates-Deposited Matter	g/m <sup>2</sup> /month	Continuous	1	17/05/19	31/05/19	-	-	-	2.9
6	Particulates-Deposited Matter	g/m <sup>2</sup> /month	Continuous	1	17/05/19	31/05/19	-	-	-	2.7
7	PM <sub>10</sub>	µg/m <sup>3</sup>	Every 6 days	5	Various	31/05/19	7.6	14.7	16.4	21.1
9	Conductivity	µS/cm	Special Frequency 1*	1	-	-	-	-	-	-
	Total organic carbon	mg/L					-	-	-	-
10	Conductivity	µS/cm		-	-	-	-	-	-	-

## SUNNYSIDE COAL MINE – MONTHLY MONITORING SUMMARY

EPL ID	Pollutant	Units of Measure	Monitoring Frequency	No. of Samples for the Month	Date(s) Sampled	Date(s) Obtained	Min Value	Mean Value	Median Value	Max or Only Value
	Total organic carbon	mg/L	Special Frequency 1*				-	-	-	-
11	TSS	mg/L	Special Frequency 2**	-	-	-	-	-	-	-
	Conductivity	µS/cm		-			-	-	-	
	Oil & Grease	mg/L		-			-	-	-	
	pH	pH		-			-	-	-	
	Total organic carbon	mg/L		-			-	-	-	
12	TSS	mg/L	Special Frequency 2**	-	-	-	-	-	-	-
	Conductivity	µS /cm		-			-	-	-	
	Oil & Grease	mg/L		-			-	-	-	
	pH	pH		-			-	-	-	
	Total organic carbon	mg/L		-			-	-	-	

**Table 2 - Pollutant Limits Apply**

EPL ID	Pollutant	Units of Measure	Monitoring Frequency	No. of Samples for the Month	Date Sampled	Date Obtained	Min Value	Max Value	100%ile Limit	Exceedance (Yes/No)	Comments
9	TSS	mg/L	Special Frequency 1*	0	-	-	-	-	50	-	No discharge
	Oil & Grease	mg/L		0			-	-	10	-	No discharge
	pH	pH		0			-	-	6.5-8.5	-	No discharge
10	TSS	mg/L	Special Frequency 1*	0	-	-	-	-	50	-	No discharge
	Oil & Grease	mg/L		0			-	-	10	-	No discharge
	pH	pH		0			-	-	6.5-8.5	-	No discharge

\* Special Frequency 1 means the collection of samples as soon as practicable after each discharge commences and in any case not more than 12 hours after each discharge commences.

**SUNNYSIDE COAL MINE – MONTHLY MONITORING SUMMARY**

\*\* Special Frequency 2 means collection of samples quarterly (in the event of flow during the quarter) at a time when there is flow and as soon as practicable after each wet weather discharge from points 9 and 10 commences and in any case not more than 12 hours after each discharge commences.

**Table 3- Noise Monitoring (Noise limits apply)**

EPL ID	Date	Start Time	Measurement Period	Measured Levels – dB(A)	Measured Levels – dB(A)	Limit	Wind speed/ direction	Compliant (Yes/No)	Comments
				Leq 15min Day	Leq 15min Evening				
13			90min			35 dB(A) Leq (15 min)		Y	
			30min					Y	
			90min					Y	
			30min					Y	
			90min					Y	
			30min					Y	
14			90min			35 dB(A) Leq (15 min)		Y	
			30min					Y	
			90min					Y	
			30min					Y	
			90min					Y	
			30min					Y	
15			90min			35 dB(A) Leq (15 min)		Y	
			30min					Y	
			90min					Y	
			30min					Y	
			90min					Y	
			30min					Y	
16			90min					Y	



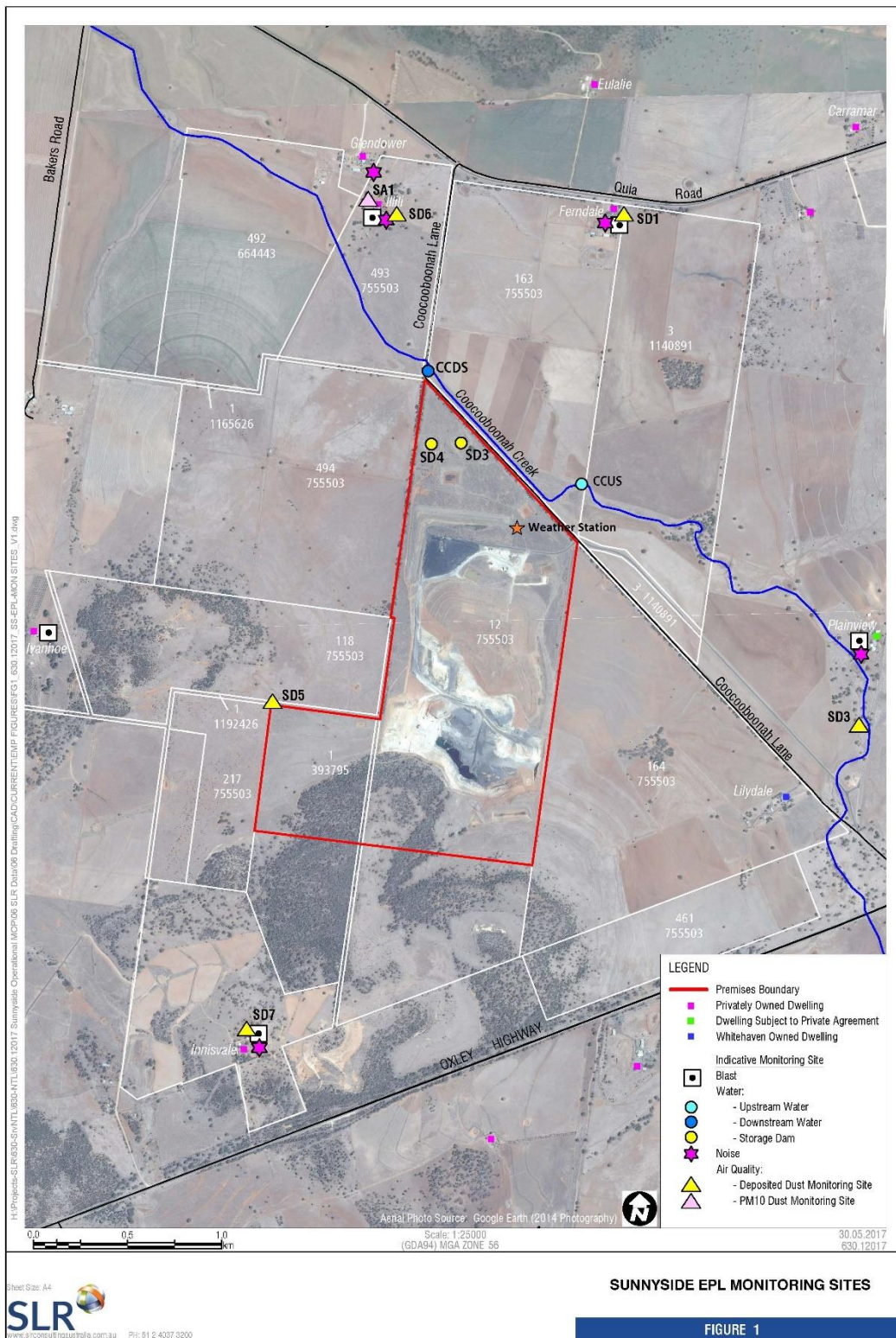
**SUNNYSIDE COAL MINE – MONTHLY MONITORING SUMMARY**

		30min		35 dB(A) Leq (15 min)		Y	
		90min				Y	
		30min				Y	
		90min				Y	
		30min				Y	
17		90min		35 dB(A) Leq (15 min)		Y	
		30min				Y	
		90min				Y	
		30min				Y	
		90min				Y	
		30min				Y	

**Table 4 – Monitoring (Blasts – Limits Apply)**

Location	Parameter	Units of Measure	Frequency	No. of Blasts for the Month	Average Value	Max or Only Value	100%ile Limit	(Potential) Non-compliance/breach
19	Blast Noise	dB (Lin Peak)	Every Blast	0				No blast in March
	Blast Vibration	mm/s						
20	Blast Noise	dB (Lin Peak)	Every Blast	0				
	Blast Vibration	mm/s						
23	Blast Noise	dB (Lin Peak)	Every Blast	0				
	Blast Vibration	mm/s						
24	Blast Noise	dB (Lin Peak)	Every Blast	0				
	Blast Vibration	mm/s						
26	Blast Noise	dB (Lin Peak)	Every Blast	0				
	Blast Vibration	mm/s						

Figure 1 – EPL 12957 Monitoring Locations



**SUNNYSIDE COAL MINE – MONTHLY MONITORING SUMMARY**
**Site Information**
**EPL No:** 12957

**EPA Website Link:** <http://epa.nsw.gov.au/prpoeoapp/ViewPOEOLicence.aspx?DOCID=40292&SYSUID=1&LICID=12957>
**Licensee:** Namoi Mining Pty Ltd

**Licensee Address:** Sunnyside Coal Project, 259 Coocooboona Lane, GUNNEDAH NSW 2380

**EPL Monitoring Points:** See Figure 1 below

**Sampling Period:** June 2019

**Obtained Date:** 11 July 2019

**Publication Date:** 11 July 2019

**Table 1 - No Pollutant Limits Apply**

EPL ID	Pollutant	Units of Measure	Monitoring Frequency	No. of Samples for the Month	Date(s) Sampled	Date(s) Obtained	Min Value	Mean Value	Median Value	Max or Only Value
1	Particulates-Deposited Matter	g/m <sup>2</sup> /month	Continuous	1	17/05/19	31/05/19	-	-	-	1.5
2	Particulates-Deposited Matter	g/m <sup>2</sup> /month	Continuous	1	17/05/19	31/05/19	-	-	-	2.4
4	Particulates-Deposited Matter	g/m <sup>2</sup> /month	Continuous	1	17/05/19	31/05/19	-	-	-	3.6
5	Particulates-Deposited Matter	g/m <sup>2</sup> /month	Continuous	1	17/05/19	31/05/19	-	-	-	2.8
6	Particulates-Deposited Matter	g/m <sup>2</sup> /month	Continuous	1	17/05/19	31/05/19	-	-	-	2.4
7	PM <sub>10</sub>	µg/m <sup>3</sup>	Every 6 days	5	Various	31/05/19	10.1	14.12	13.65	15.1
9	Conductivity	µS/cm	Special Frequency 1*	1	-	-	-	-	-	-
	Total organic carbon	mg/L					-	-	-	-
10	Conductivity	µS/cm		-	-	-	-	-	-	-

## SUNNYSIDE COAL MINE – MONTHLY MONITORING SUMMARY

EPL ID	Pollutant	Units of Measure	Monitoring Frequency	No. of Samples for the Month	Date(s) Sampled	Date(s) Obtained	Min Value	Mean Value	Median Value	Max or Only Value
	Total organic carbon	mg/L	Special Frequency 1*				-	-	-	-
11	TSS	mg/L	Special Frequency 2**	-	-	-	-	-	-	-
	Conductivity	µS/cm		-			-	-	-	
	Oil & Grease	mg/L		-			-	-	-	
	pH	pH		-			-	-	-	
	Total organic carbon	mg/L		-			-	-	-	
12	TSS	mg/L	Special Frequency 2**	-	-	-	-	-	-	-
	Conductivity	µS/cm		-			-	-	-	
	Oil & Grease	mg/L		-			-	-	-	
	pH	pH		-			-	-	-	
	Total organic carbon	mg/L		-			-	-	-	

**Table 2 - Pollutant Limits Apply**

EPL ID	Pollutant	Units of Measure	Monitoring Frequency	No. of Samples for the Month	Date Sampled	Date Obtained	Min Value	Max Value	100%ile Limit	Exceedance (Yes/No)	Comments
9	TSS	mg/L	Special Frequency 1*	0	-	-	-	-	50	-	No discharge
	Oil & Grease	mg/L		0			-	-	10	-	No discharge
	pH	pH		0			-	-	6.5-8.5	-	No discharge
10	TSS	mg/L	Special Frequency 1*	0	-	-	-	-	50	-	No discharge
	Oil & Grease	mg/L		0			-	-	10	-	No discharge
	pH	pH		0			-	-	6.5-8.5	-	No discharge

\* Special Frequency 1 means the collection of samples as soon as practicable after each discharge commences and in any case not more than 12 hours after each discharge commences.

**SUNNYSIDE COAL MINE – MONTHLY MONITORING SUMMARY**

\*\* Special Frequency 2 means collection of samples quarterly (in the event of flow during the quarter) at a time when there is flow and as soon as practicable after each wet weather discharge from points 9 and 10 commences and in any case not more than 12 hours after each discharge commences.

**Table 3- Noise Monitoring (Noise limits apply)**

EPL ID	Date	Start Time	Measurement Period	Measured Levels – dB(A)	Measured Levels – dB(A)	Limit	Wind speed/ direction	Compliant (Yes/No)	Comments
				Leq 15min Day	Leq 15min Evening				
13	03/06/2019	09:09	90min	I/A		35 dB(A) Leq (15 min)	3.3 – 4.1 m/s W/WSW	Y	
		19:44	30min		I/A		3.8- 4.8 m/s	Y	
	04/06/2019	10:10	90min	33			5.7 – 6.8 m/s S/SSW	Y	
		18:53	30min		I/A		3.9 – 4.2 m/s SSE	Y	
	05/06/2019	12:50	90min	35			6.4 – 7.2 m/s SE	Y	
		19:32	30min		I/A		1.7 - 2 m/s ESE	Y	
14	03/06/2019	11:23	90min	I/A		35 dB(A) Leq (15 min)	4.4 – 7.7 m/s W/WNW	Y	
		18:59	30min		I/A		3.3 – 3.4 m/s WSW	Y	
	04/06/2019	08:24	90min	35			3.1 – 5.7 m/s SW/SSW	Y	
		18:11	30min		I/A		3.6 – 3.8 m/s S/SSW	Y	
	05/06/2019	10:55	90min	I/A			5.2 – 6.4 m/s E/ESE	Y	
		18:51	30min		I/A		1.3 – 2.4 m/s	Y	
15	03/06/2019	09:02	90min	I/A		35 dB(A) Leq (15 min)	3 - 4.7 m/s W/WSW	Y	
		18:57	30min		I/A		3.2 – 3.6 m/s WSW	Y	
	04/06/2019	13:07	90min	I/A			5.5 – 7.2 m/s S/SSW	Y	
		18:16	30min		I/A		5.5 – 7.2 m/s S/SSW	Y	
16	05/06/2019	12:10	90min	I/A		6.2 – 6.8 m/s E/SE	Y		

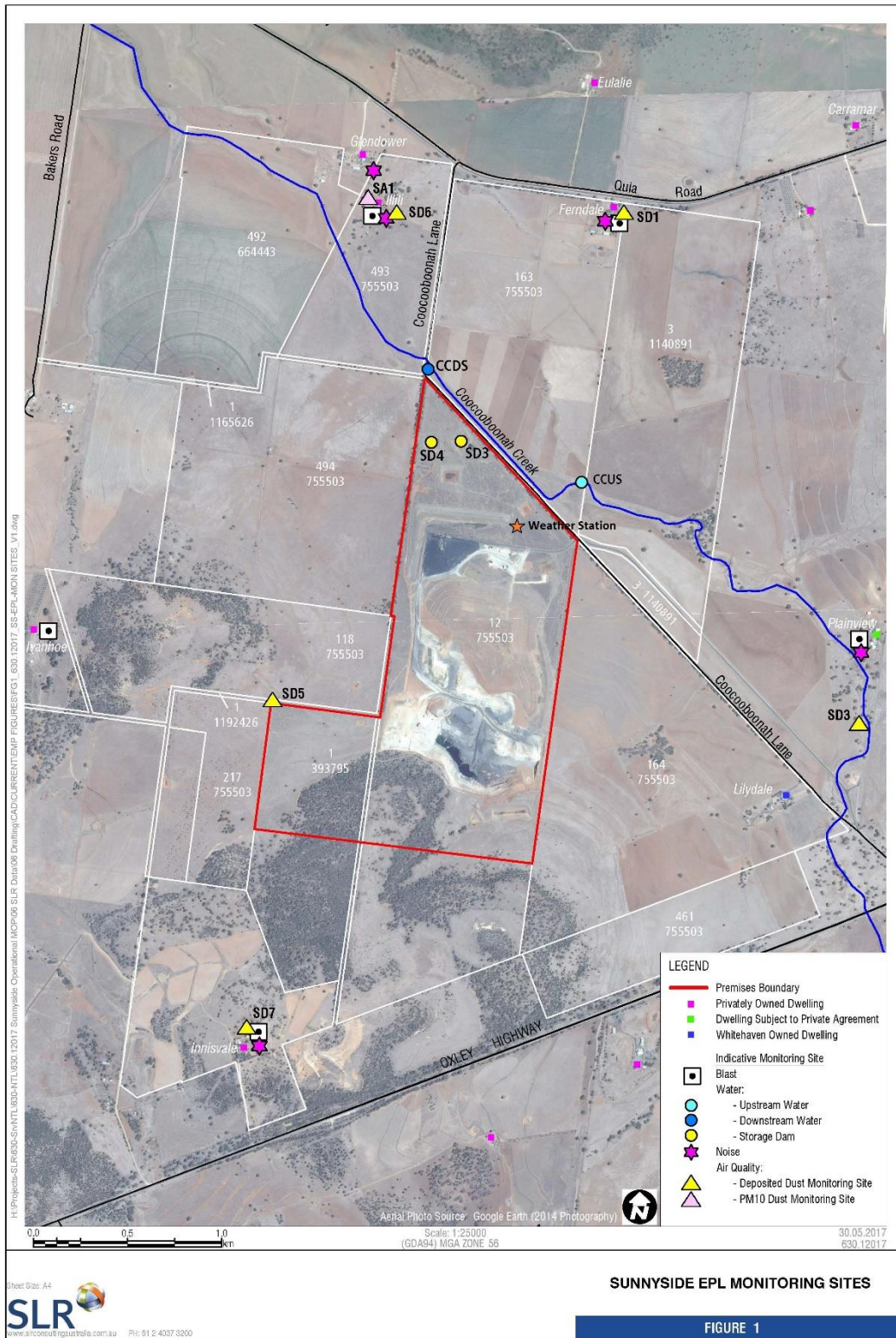
## SUNNYSIDE COAL MINE – MONTHLY MONITORING SUMMARY

		20:12	30min		I/A	35 dB(A) Leq (15 min)	2.6 – 3.4 m/s SE	Y	
17	03/06/2019	13:28	90min	N/M		35 dB(A) Leq (15 min)	7.5 – 8.7 m/s	Y	
		20:08	30min		I/A		5 – 5.2 m/s WSW	Y	
	04/06/2019	11:01	90min	N/M			5.7 – 6.9 m/s S/SSW	Y	
		19:04	30min		I/A		5.7 – 6.9 m/s S/SSW	Y	
	05/06/2019	08:58	90min	35			3.5 - 5.8 m/s	Y	
		19:19	30min		I/A		3.5 - 5.8 m/s	Y	

**Table 4 – Monitoring (Blasts – Limits Apply)**

Location	Parameter	Units of Measure	Frequency	No. of Blasts for the Month	Average Value	Max or Only Value	100%ile Limit	(Potential) Non-compliance/breach
19	Blast Noise	dB (Lin Peak)	Every Blast	2	108.45	109.45		
	Blast Vibration	mm/s			0.58	1.07		
20	Blast Noise	dB (Lin Peak)	Every Blast	2	105.15	107.7		
	Blast Vibration	mm/s			0.49	0.90		
23	Blast Noise	dB (Lin Peak)	Every Blast	2	107.4	112.9		
	Blast Vibration	mm/s			0.68	1.16		
24	Blast Noise	dB (Lin Peak)	Every Blast	2	111.4	116		Exceeds 115dB for more than 5% of blasts
	Blast Vibration	mm/s			0.49	0.86		
26	Blast Noise	dB (Lin Peak)	Every Blast	2	109.7	111		
	Blast Vibration	mm/s			1.03	1.84		

Figure 1 – EPL 12957 Monitoring Locations



## SUNNYSIDE COAL MINE – MONTHLY MONITORING SUMMARY

### Site Information

**EPL No:** 12957

**EPA Website Link:** <http://epa.nsw.gov.au/prpoeoapp/ViewPOEOLicence.aspx?DOCID=40292&SYSUID=1&LICID=12957>

**Licensee:** Namoi Mining Pty Ltd

**Licensee Address:** Sunnyside Coal Project, 259 Coocooboona Lane, GUNNEDAH NSW 2380

**EPL Monitoring Points:** See Figure 1 below

**Sampling Period:** July 2019

**Obtained Date:** 13 August 2019

**Publication Date:** 13 August 2019

**Table 1 - No Pollutant Limits Apply**

EPL ID	Pollutant	Units of Measure	Monitoring Frequency	No. of Samples for the Month	Date(s) Sampled	Date(s) Obtained	Min Value	Mean Value	Median Value	Max or Only Value
1	Particulates-Deposited Matter	g/m <sup>2</sup> /month	Continuous	1	18/07/19	05/08/19	-	-	-	1.9
2	Particulates-Deposited Matter	g/m <sup>2</sup> /month	Continuous	1	18/07/19	05/08/19	-	-	-	2.0
4	Particulates-Deposited Matter	g/m <sup>2</sup> /month	Continuous	1	18/07/19	05/08/19	-	-	-	1.7
5	Particulates-Deposited Matter	g/m <sup>2</sup> /month	Continuous	1	18/07/19	05/08/19	-	-	-	0.8
6	Particulates-Deposited Matter	g/m <sup>2</sup> /month	Continuous	1	18/07/19	05/08/19	-	-	-	0.7
7	PM <sub>10</sub>	µg/m <sup>3</sup>	Every 6 days	6	Various	13/08/19	3.6	23.9	21.45	48.4
9	Conductivity	µS/cm	Special Frequency 1*	1	-	-	-	-	-	-
	Total organic carbon	mg/L					-	-	-	-
10	Conductivity	µS/cm		-	-	-	-	-	-	-



## SUNNYSIDE COAL MINE – MONTHLY MONITORING SUMMARY

EPL ID	Pollutant	Units of Measure	Monitoring Frequency	No. of Samples for the Month	Date(s) Sampled	Date(s) Obtained	Min Value	Mean Value	Median Value	Max or Only Value
	Total organic carbon	mg/L	Special Frequency 1*				-	-	-	-
11	TSS	mg/L	Special Frequency 2**	-			-	-	-	-
	Conductivity	µS/cm		-			-	-	-	
	Oil & Grease	mg/L		-			-	-	-	
	pH	pH		-			-	-	-	
	Total organic carbon	mg/L		-			-	-	-	
12	TSS	mg/L	Special Frequency 2**	-			-	-	-	-
	Conductivity	µS/cm		-			-	-	-	
	Oil & Grease	mg/L		-			-	-	-	
	pH	pH		-			-	-	-	
	Total organic carbon	mg/L		-			-	-	-	

**Table 2 - Pollutant Limits Apply**

EPL ID	Pollutant	Units of Measure	Monitoring Frequency	No. of Samples for the Month	Date Sampled	Date Obtained	Min Value	Max Value	100%ile Limit	Exceedance (Yes/No)	Comments
9	TSS	mg/L	Special Frequency 1*	0	-	-	-	-	50	-	No discharge
	Oil & Grease	mg/L		0			-	-	10	-	No discharge
	pH	pH		0			-	-	6.5-8.5	-	No discharge
10	TSS	mg/L	Special Frequency 1*	0	-	-	-	-	50	-	No discharge
	Oil & Grease	mg/L		0			-	-	10	-	No discharge
	pH	pH		0			-	-	6.5-8.5	-	No discharge

\* Special Frequency 1 means the collection of samples as soon as practicable after each discharge commences and in any case not more than 12 hours after each discharge commences.



## SUNNYSIDE COAL MINE – MONTHLY MONITORING SUMMARY

\*\* Special Frequency 2 means collection of samples quarterly (in the event of flow during the quarter) at a time when there is flow and as soon as practicable after each wet weather discharge from points 9 and 10 commences and in any case not more than 12 hours after each discharge commences.

**Table 3- Noise Monitoring (Noise limits apply)**

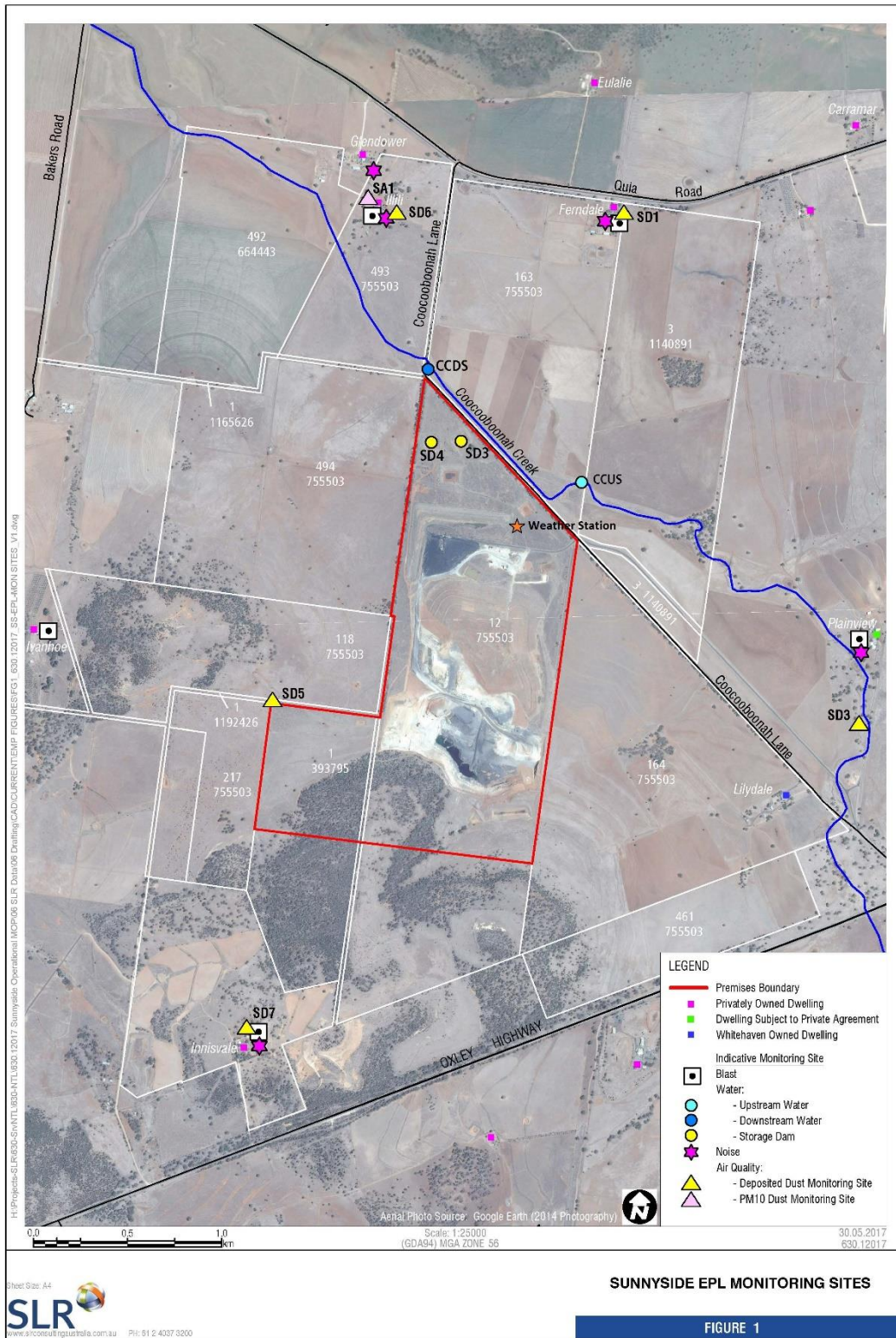
EPL ID	Date	Start Time	Measurement Period	Measured Levels – dB(A)	Measured Levels – dB(A)	Limit	Wind speed/ direction	Compliant (Yes/No)	Comments
				L <sub>eq</sub> 15min Day	L <sub>eq</sub> 15min Evening				
13									
14									
15									
16									
								Y	



**SUNNYSIDE COAL MINE – MONTHLY MONITORING SUMMARY**

17									

Figure 1 – EPL 12957 Monitoring Locations



## SUNNYSIDE COAL MINE – MONTHLY MONITORING SUMMARY

### Site Information

EPL No: 12957

EPA Website Link: <http://epa.nsw.gov.au/prpoeoapp/ViewPOEOLicence.aspx?DOCID=40292&SYSUID=1&LICID=12957>

Licensee: Namoi Mining Pty Ltd

Licensee Address: Sunnyside Coal Project, 259 Coocooboona Lane, GUNNEDAH NSW 2380

EPL Monitoring Points: See Figure 1 below

Sampling Period: August 2019

Obtained Date: 11 September 2019

Publication Date: 19 September 2019

Table 1 - No Pollutant Limits Apply

EPL ID	Pollutant	Units of Measure	Monitoring Frequency	No. of Samples for the Month	Date(s) Sampled	Date(s) Obtained	Min Value	Mean Value	Median Value	Max or Only Value
1	Particulates-Deposited Matter	g/m <sup>2</sup> /month	Continuous	1	19/08/19	27/08/19	-	-	Dust results under review, possible lab error	1.0
2	Particulates-Deposited Matter	g/m <sup>2</sup> /month	Continuous	1	19/08/19	27/08/19	-	-		0.7
4	Particulates-Deposited Matter	g/m <sup>2</sup> /month	Continuous	1	19/08/19	27/08/19	-	-		1.5
5	Particulates-Deposited Matter	g/m <sup>2</sup> /month	Continuous	1	19/08/19	27/08/19	-	-		1.1
6	Particulates-Deposited Matter	g/m <sup>2</sup> /month	Continuous	1	19/08/19	27/08/19	-	-		1.2
7	PM <sub>10</sub>	µg/m <sup>3</sup>	Every 6 days	5	Various	11/09/19	4.2	26.1	31.5	47.8
9	Conductivity	µS/cm	Special Frequency 1*	1	-	-	-	-	-	-
	Total organic carbon	mg/L					-	-	-	-
10	Conductivity	µS/cm		-	-	-	-	-	-	-

## SUNNYSIDE COAL MINE – MONTHLY MONITORING SUMMARY

EPL ID	Pollutant	Units of Measure	Monitoring Frequency	No. of Samples for the Month	Date(s) Sampled	Date(s) Obtained	Min Value	Mean Value	Median Value	Max or Only Value
	Total organic carbon	mg/L	Special Frequency 1*				-	-	-	-
11	TSS	mg/L	Special Frequency 2**	-			-	-	-	-
	Conductivity	µS/cm		-			-	-	-	
	Oil & Grease	mg/L		-			-	-	-	
	pH	pH		-			-	-	-	
	Total organic carbon	mg/L		-			-	-	-	
12	TSS	mg/L	Special Frequency 2**	-			-	-	-	-
	Conductivity	µS/cm		-			-	-	-	
	Oil & Grease	mg/L		-			-	-	-	
	pH	pH		-			-	-	-	
	Total organic carbon	mg/L		-			-	-	-	

**Table 2 - Pollutant Limits Apply**

EPL ID	Pollutant	Units of Measure	Monitoring Frequency	No. of Samples for the Month	Date Sampled	Date Obtained	Min Value	Max Value	100%ile Limit	Exceedance (Yes/No)	Comments
9	TSS	mg/L	Special Frequency 1*	0	-	-	-	-	50	-	No discharge
	Oil & Grease	mg/L		0			-	-	10	-	No discharge
	pH	pH		0			-	-	6.5-8.5	-	No discharge
10	TSS	mg/L	Special Frequency 1*	0	-	-	-	-	50	-	No discharge
	Oil & Grease	mg/L		0			-	-	10	-	No discharge
	pH	pH		0			-	-	6.5-8.5	-	No discharge

\* Special Frequency 1 means the collection of samples as soon as practicable after each discharge commences and in any case not more than 12 hours after each discharge commences.



## SUNNYSIDE COAL MINE – MONTHLY MONITORING SUMMARY

\*\* Special Frequency 2 means collection of samples quarterly (in the event of flow during the quarter) at a time when there is flow and as soon as practicable after each wet weather discharge from points 9 and 10 commences and in any case not more than 12 hours after each discharge commences.

**Table 3- Noise Monitoring (Noise limits apply)**

EPL ID	Date	Start Time	Measurement Period	Measured Levels – dB(A)	Measured Levels – dB(A)	Limit	Wind speed/ direction	Compliant (Yes/No)	Comments
				L <sub>eq</sub> 15min Day	L <sub>eq</sub> 15min Evening				
13									
14									
15									
16									
								Y	

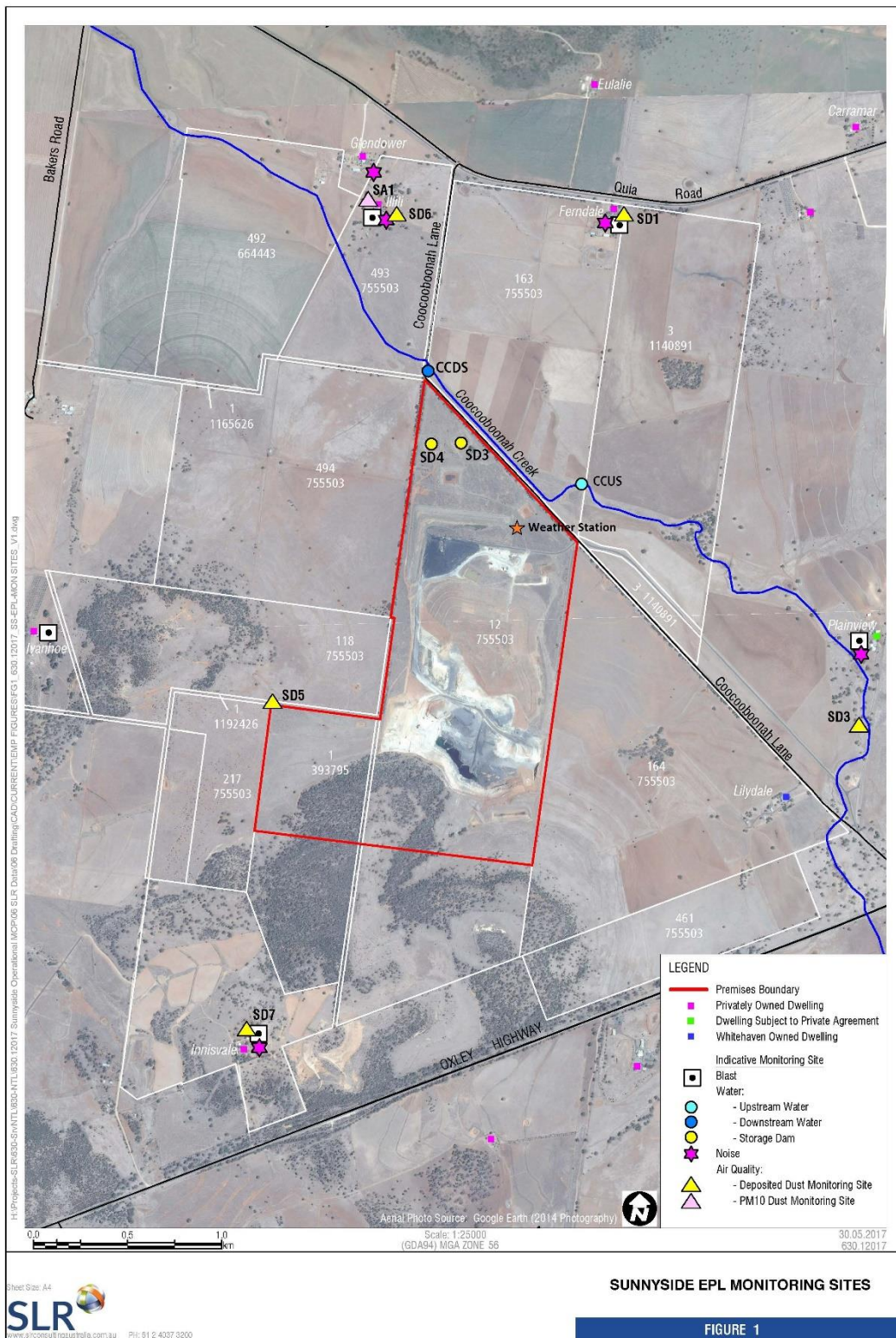


**SUNNYSIDE COAL MINE – MONTHLY MONITORING SUMMARY**

17									



Figure 1 – EPL 12957 Monitoring Locations



## SUNNYSIDE COAL MINE – MONTHLY MONITORING SUMMARY

### Site Information

**EPL No:** 12957

**EPA Website Link:** <http://epa.nsw.gov.au/prpoeoapp/ViewPOEOLicence.aspx?DOCID=40292&SYSUID=1&LICID=12957>

**Licensee:** Namoi Mining Pty Ltd

**Licensee Address:** Sunnyside Coal Project, 259 Coocooboona Lane, GUNNEDAH NSW 2380

**EPL Monitoring Points:** See Figure 1 below

**Sampling Period:** September 2019

**Obtained Date:** 11 October 2019

**Publication Date:** 15 October 2019

**Table 1 - No Pollutant Limits Apply**

EPL ID	Pollutant	Units of Measure	Monitoring Frequency	No. of Samples for the Month	Date(s) Sampled	Date(s) Obtained	Min Value	Mean Value	Median Value	Max or Only Value
1	Particulates-Deposited Matter	g/m <sup>2</sup> /month	Continuous	1	19/09/19	04/10/19	-	-	-	2.5
2	Particulates-Deposited Matter	g/m <sup>2</sup> /month	Continuous	1	19/09/19	04/10/19	-	-	-	1.3
4	Particulates-Deposited Matter	g/m <sup>2</sup> /month	Continuous	1	19/09/19	04/10/19	-	-	-	1.0
5	Particulates-Deposited Matter	g/m <sup>2</sup> /month	Continuous	1	19/09/19	04/10/19	-	-	-	1.4
6	Particulates-Deposited Matter	g/m <sup>2</sup> /month	Continuous	1	19/09/19	04/10/19	-	-	-	1.2
7	PM <sub>10</sub>	µg/m <sup>3</sup>	Every 6 days	5	Various	11/10/19	1.5	14.26	13.7	30.6
9	Conductivity	µS/cm	Special Frequency 1*	0	-	-	-	-	-	-
	Total organic carbon	mg/L					-	-	-	-
10	Conductivity	µS/cm		-	-	-	-	-	-	-

## SUNNYSIDE COAL MINE – MONTHLY MONITORING SUMMARY

EPL ID	Pollutant	Units of Measure	Monitoring Frequency	No. of Samples for the Month	Date(s) Sampled	Date(s) Obtained	Min Value	Mean Value	Median Value	Max or Only Value
	Total organic carbon	mg/L	Special Frequency 1*				-	-	-	-
11	TSS	mg/L	Special Frequency 2**	-			-	-	-	-
	Conductivity	µS/cm		-			-	-	-	
	Oil & Grease	mg/L		-			-	-	-	
	pH	pH		-			-	-	-	
	Total organic carbon	mg/L		-			-	-	-	
12	TSS	mg/L	Special Frequency 2**	-			-	-	-	-
	Conductivity	µS/cm		-			-	-	-	
	Oil & Grease	mg/L		-			-	-	-	
	pH	pH		-			-	-	-	
	Total organic carbon	mg/L		-			-	-	-	

**Table 2 - Pollutant Limits Apply**

EPL ID	Pollutant	Units of Measure	Monitoring Frequency	No. of Samples for the Month	Date Sampled	Date Obtained	Min Value	Max Value	100%ile Limit	Exceedance (Yes/No)	Comments
9	TSS	mg/L	Special Frequency 1*	0	-	-	-	-	50	-	No discharge
	Oil & Grease	mg/L		0			-	-	10	-	No discharge
	pH	pH		0			-	-	6.5-8.5	-	No discharge
10	TSS	mg/L	Special Frequency 1*	0	-	-	-	-	50	-	No discharge
	Oil & Grease	mg/L		0			-	-	10	-	No discharge
	pH	pH		0			-	-	6.5-8.5	-	No discharge

\* Special Frequency 1 means the collection of samples as soon as practicable after each discharge commences and in any case not more than 12 hours after each discharge commences.

**SUNNYSIDE COAL MINE – MONTHLY MONITORING SUMMARY**

\*\* Special Frequency 2 means collection of samples quarterly (in the event of flow during the quarter) at a time when there is flow and as soon as practicable after each wet weather discharge from points 9 and 10 commences and in any case not more than 12 hours after each discharge commences.

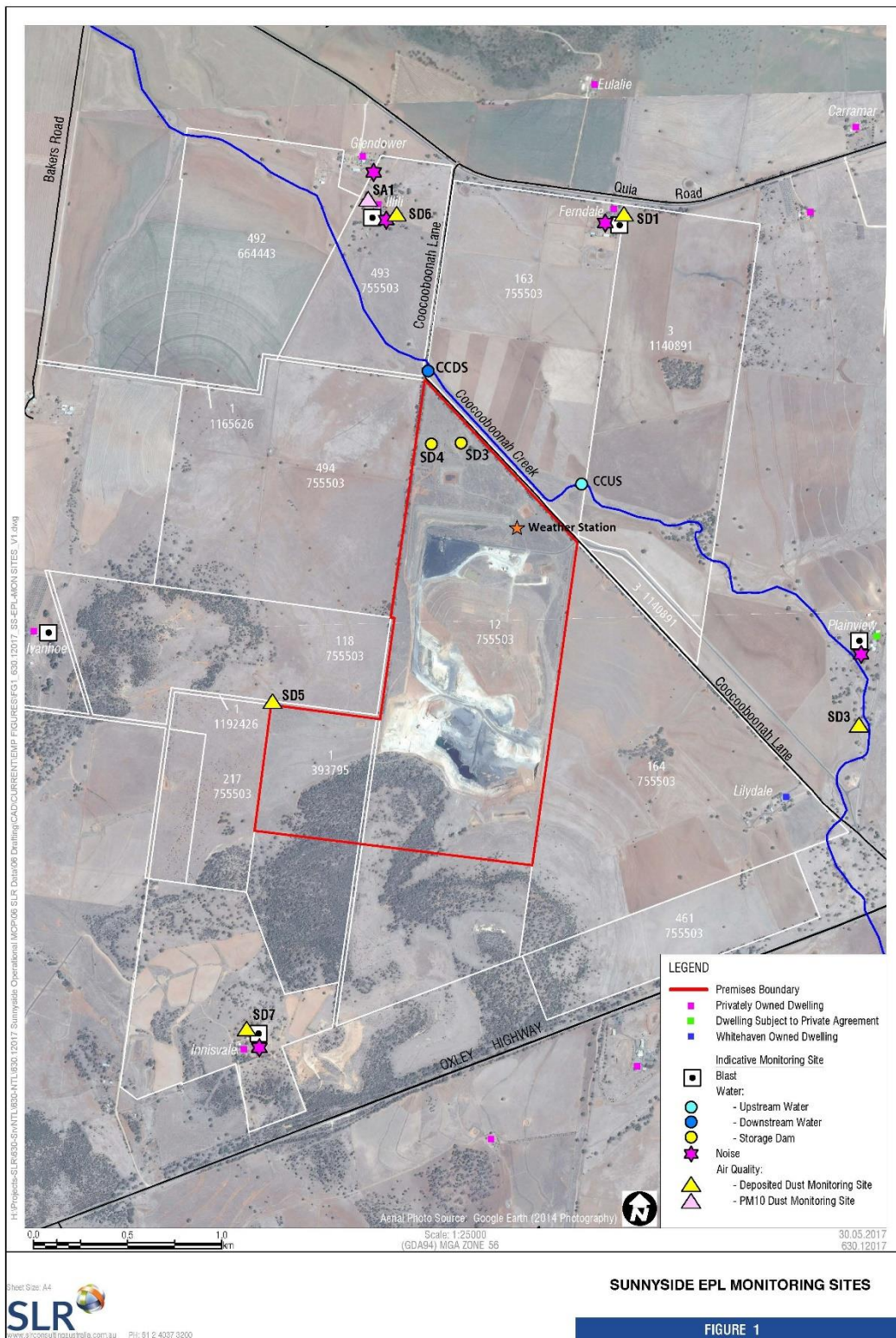
**Table 3- Noise Monitoring (Noise limits apply)**

EPL ID	Date	Start Time	Measurement Period	Measured Levels – dB(A)	Measured Levels – dB(A)	Limit	Wind speed/ direction	Compliant (Yes/No)	Comments
				Leq 15min Day	Leq 15min Evening				
13	23/09/2019	-	-	-		35 dB(A) Leq (15 min)	-	-	-
		20:16	Evening		<30		219° 1.8m/s	Y	
	24/09/2019	11:55	Day	I/A			60° 2.3m/s	Y	
		19:54	Evening		I/A		171° 3.4m/s	Y	
	25/09/2019	10:54	Day	I/A			56° 1.8m/s	Y	
		19:57	Evening		I/A		112° 2.8m/s	Y	
	26/09/2019	08:27	Day	<25			42° 1.3m/s	Y	
		-	-		-		-	-	-
14	23/09/2019	13:36	Day	<38 (I/A)		35 dB(A) Leq (15 min)	210° 5.6m/s	Y	
		19:18	Evening		<30		212° 1.5m/s	Y	
	24/09/2019	11:45	Day	<25			140° 1.1m/s	Y	
		19:58	Evening		20		177° 3.6m/s	Y	
	25/09/2019	10:47	Day	<25			95° 0.5m/s	Y	
		19:53	Evening		<9 (I/A)		113° 2m/s	Y	
15	23/09/2019	13:45	Day	<25		35 dB(A) Leq (15 min)	210° 5.6m/s	Y	
		19:53	Evening		<9 (I/A)		212° 1.5m/s	Y	
	24/09/2019	09:55	Day	<20 (I/A)			94° 1.5m/s	Y	
		19:02	Evening		<20		153° 2.3m/s	Y	
	25/09/2019	08:58	Day	<30			89° 1.6m/s	Y	

## SUNNYSIDE COAL MINE – MONTHLY MONITORING SUMMARY

		19:03	Evening		<10 (I/A)		68° 0.8m/s	Y	
16	23/09/2019	-	-	-		35 dB(A) Leq (15 min) -	-	-	-
		21:32	Evening		<17 (I/A)		191° 3.7m/s	Y	
	24/09/2019	10:11	Day	<31 (I/A)			153° 1.7m/s	Y	
		19:08	Evening		<17 (I/A)		176° 2.7m/s	Y	
	25/09/2019	09:07	Day	<30			130° 1.7m/s	Y	
		19:12	Evening		<10 (I/A)		119° 2m/s	Y	
	26/09/2019	08:36	Day	<30			320° 2m/s	Y	
		-	-	-	-		-	-	-
17	23/09/2019	15:48	Day	<40		35 dB(A) Leq (15 min)	211° 6.3m/s	Y	Private agreement with Plainview property
		20:18	Evening		<14 (I/A)		213° 1.5m/s	Y	
	24/09/2019	13:44	Day	<30			302° 1.8m/s	Y	
		20:43	Evening		<10 (I/A)		182° 3.7m/s	Y	
	25/09/2019	12:40	Day	35			270° 2.6m/s	Y	
		20:45	Evening		<11 (I/A)		241° 1m/s	Y	

Figure 1 – EPL 12957 Monitoring Locations





## SUNNYSIDE COAL MINE – MONTHLY MONITORING SUMMARY

### Site Information

**EPL No:** 12957

**EPA Website Link:** <http://epa.nsw.gov.au/prpoeoapp/ViewPOEOLicence.aspx?DOCID=40292&SYSUID=1&LICID=12957>

**Licensee:** Namoi Mining Pty Ltd

**Licensee Address:** Sunnyside Coal Project, 259 Coocooboona Lane, GUNNEDAH NSW 2380

**EPL Monitoring Points:** See Figure 1 below

**Sampling Period:** October 2019

**Obtained Date:** 11<sup>th</sup> November 2019

**Publication Date:** 15<sup>th</sup> November 2019

**Table 1 - No Pollutant Limits Apply**

EPL ID	Pollutant	Units of Measure	Monitoring Frequency	No. of Samples for the Month	Date(s) Sampled	Date(s) Obtained	Min Value	Mean Value	Median Value	Max or Only Value
1	Particulates-Deposited Matter	g/m <sup>2</sup> /month	Continuous	1	21/10/2019	04/11/19	-	-	-	1.8
2	Particulates-Deposited Matter	g/m <sup>2</sup> /month	Continuous	1	21/10/2019	04/11/19	-	-	-	5.8
4	Particulates-Deposited Matter	g/m <sup>2</sup> /month	Continuous	1	21/10/2019	04/11/19	-	-	-	1.8
5	Particulates-Deposited Matter	g/m <sup>2</sup> /month	Continuous	1	21/10/2019	04/11/19	-	-	-	1.6
6	Particulates-Deposited Matter	g/m <sup>2</sup> /month	Continuous	1	21/10/2019	04/11/19	-	-	-	1.2
7	PM <sub>10</sub>	µg/m <sup>3</sup>	Every 6 days	5	Various	15/11/2019	25.8	71.9	60.4	146
9	Conductivity	µS/cm	Special Frequency 1*	0	-	-	-	-	-	-
	Total organic carbon	mg/L					-	-	-	-
10	Conductivity	µS/cm		-	-	-	-	-	-	-

## SUNNYSIDE COAL MINE – MONTHLY MONITORING SUMMARY

EPL ID	Pollutant	Units of Measure	Monitoring Frequency	No. of Samples for the Month	Date(s) Sampled	Date(s) Obtained	Min Value	Mean Value	Median Value	Max or Only Value
	Total organic carbon	mg/L	Special Frequency 1*				-	-	-	-
11	TSS	mg/L	Special Frequency 2**	-			-	-	-	-
	Conductivity	µS/cm		-			-	-	-	
	Oil & Grease	mg/L		-			-	-	-	
	pH	pH		-			-	-	-	
	Total organic carbon	mg/L		-			-	-	-	
12	TSS	mg/L	Special Frequency 2**	-			-	-	-	-
	Conductivity	µS/cm		-			-	-	-	
	Oil & Grease	mg/L		-			-	-	-	
	pH	pH		-			-	-	-	
	Total organic carbon	mg/L		-			-	-	-	

**Table 2 - Pollutant Limits Apply**

EPL ID	Pollutant	Units of Measure	Monitoring Frequency	No. of Samples for the Month	Date Sampled	Date Obtained	Min Value	Max Value	100%ile Limit	Exceedance (Yes/No)	Comments
9	TSS	mg/L	Special Frequency 1*	0	-	-	-	-	50	-	No discharge
	Oil & Grease	mg/L		0			-	-	10	-	No discharge
	pH	pH		0			-	-	6.5-8.5	-	No discharge
10	TSS	mg/L	Special Frequency 1*	0	-	-	-	-	50	-	No discharge
	Oil & Grease	mg/L		0			-	-	10	-	No discharge
	pH	pH		0			-	-	6.5-8.5	-	No discharge

\* Special Frequency 1 means the collection of samples as soon as practicable after each discharge commences and in any case not more than 12 hours after each discharge commences.





## SUNNYSIDE COAL MINE – MONTHLY MONITORING SUMMARY

\*\* Special Frequency 2 means collection of samples quarterly (in the event of flow during the quarter) at a time when there is flow and as soon as practicable after each wet weather discharge from points 9 and 10 commences and in any case not more than 12 hours after each discharge commences.

**Table 3- Noise Monitoring (Noise limits apply)**

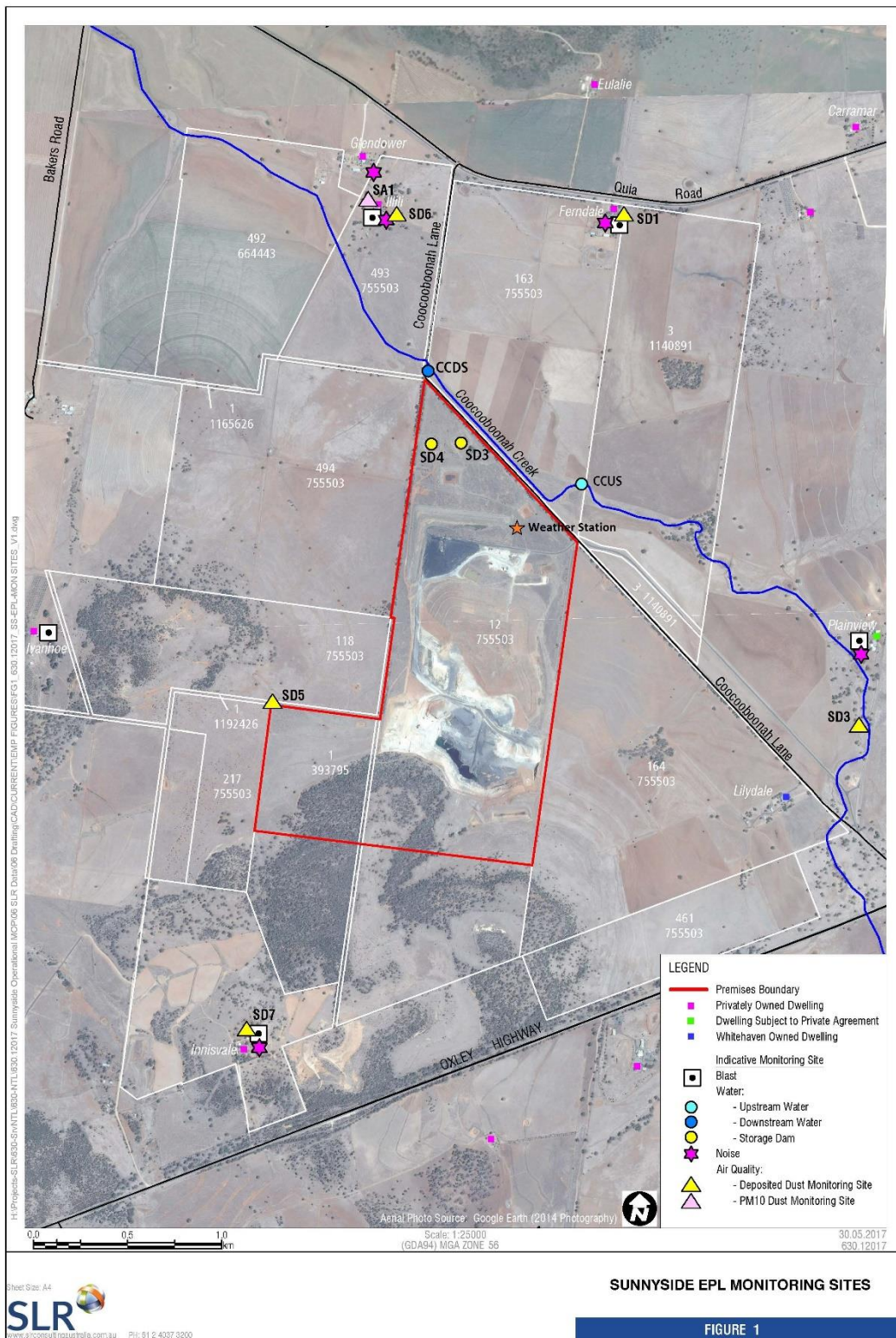
EPL ID	Date	Start Time	Measurement Period	Measured Levels – dB(A)	Measured Levels – dB(A)	Limit	Wind speed/ direction	Compliant (Yes/No)	Comments
				L <sub>eq</sub> 15min Day	L <sub>eq</sub> 15min Evening				
13									
14									
15									



**SUNNYSIDE COAL MINE – MONTHLY MONITORING SUMMARY**

16									
17									

**Figure 1 – EPL 12957 Monitoring Locations**



## SUNNYSIDE COAL MINE – MONTHLY MONITORING SUMMARY

### Site Information

**EPL No:** 12957

**EPA Website Link:** <http://epa.nsw.gov.au/prpoeoapp/ViewPOEOLicence.aspx?DOCID=40292&SYSUID=1&LICID=12957>

**Licensee:** Namoi Mining Pty Ltd

**Licensee Address:** Sunnyside Coal Project, 259 Coocooboona Lane, GUNNEDAH NSW 2380

**EPL Monitoring Points:** See Figure 1 below

**Sampling Period:** November 2019

**Obtained Date:** 11 December 2019

**Publication Date:** 18 December 2019

**Table 1 - No Pollutant Limits Apply**

EPL ID	Pollutant	Units of Measure	Monitoring Frequency	No. of Samples for the Month	Date(s) Sampled	Date(s) Obtained	Min Value	Mean Value	Median Value	Max or Only Value
1	Particulates-Deposited Matter	g/m <sup>2</sup> /month	Continuous	1	20/11/19	27/11/19	-	-		1.6
2	Particulates-Deposited Matter	g/m <sup>2</sup> /month	Continuous	1	20/11/19	27/11/19	-	-		5.9
4	Particulates-Deposited Matter	g/m <sup>2</sup> /month	Continuous	1	20/11/19	27/11/19	-	-		2.70
5	Particulates-Deposited Matter	g/m <sup>2</sup> /month	Continuous	1	20/11/19	27/11/19	-	-		1.94
6	Particulates-Deposited Matter	g/m <sup>2</sup> /month	Continuous	1	20/11/19	27/11/19	-	-		1.2
7	PM <sub>10</sub>	µg/m <sup>3</sup>	Every 6 days	5	Various	11/12/19	4.2	75.92	52.2	198
9	Conductivity	µS/cm	Special Frequency 1*	0	-	-	-	-	-	-
	Total organic carbon	mg/L					-	-	-	-
10	Conductivity	µS/cm		-	-	-	-	-	-	-

## SUNNYSIDE COAL MINE – MONTHLY MONITORING SUMMARY

EPL ID	Pollutant	Units of Measure	Monitoring Frequency	No. of Samples for the Month	Date(s) Sampled	Date(s) Obtained	Min Value	Mean Value	Median Value	Max or Only Value
	Total organic carbon	mg/L	Special Frequency 1*				-	-	-	-
11	TSS	mg/L	Special Frequency 2**	-			-	-	-	-
	Conductivity	µS/cm		-			-	-	-	
	Oil & Grease	mg/L		-			-	-	-	
	pH	pH		-			-	-	-	
	Total organic carbon	mg/L		-			-	-	-	
12	TSS	mg/L	Special Frequency 2**	-			-	-	-	-
	Conductivity	µS/cm		-			-	-	-	
	Oil & Grease	mg/L		-			-	-	-	
	pH	pH		-			-	-	-	
	Total organic carbon	mg/L		-			-	-	-	

**Table 2 - Pollutant Limits Apply**

EPL ID	Pollutant	Units of Measure	Monitoring Frequency	No. of Samples for the Month	Date Sampled	Date Obtained	Min Value	Max Value	100%ile Limit	Exceedance (Yes/No)	Comments
9	TSS	mg/L	Special Frequency 1*	0	-	-	-	-	50	-	No discharge
	Oil & Grease	mg/L		0			-	-	10	-	No discharge
	pH	pH		0			-	-	6.5-8.5	-	No discharge
10	TSS	mg/L	Special Frequency 1*	0	-	-	-	-	50	-	No discharge
	Oil & Grease	mg/L		0			-	-	10	-	No discharge
	pH	pH		0			-	-	6.5-8.5	-	No discharge

\* Special Frequency 1 means the collection of samples as soon as practicable after each discharge commences and in any case not more than 12 hours after each discharge commences.



## SUNNYSIDE COAL MINE – MONTHLY MONITORING SUMMARY

\*\* Special Frequency 2 means collection of samples quarterly (in the event of flow during the quarter) at a time when there is flow and as soon as practicable after each wet weather discharge from points 9 and 10 commences and in any case not more than 12 hours after each discharge commences.

**Table 3- Noise Monitoring (Noise limits apply)**

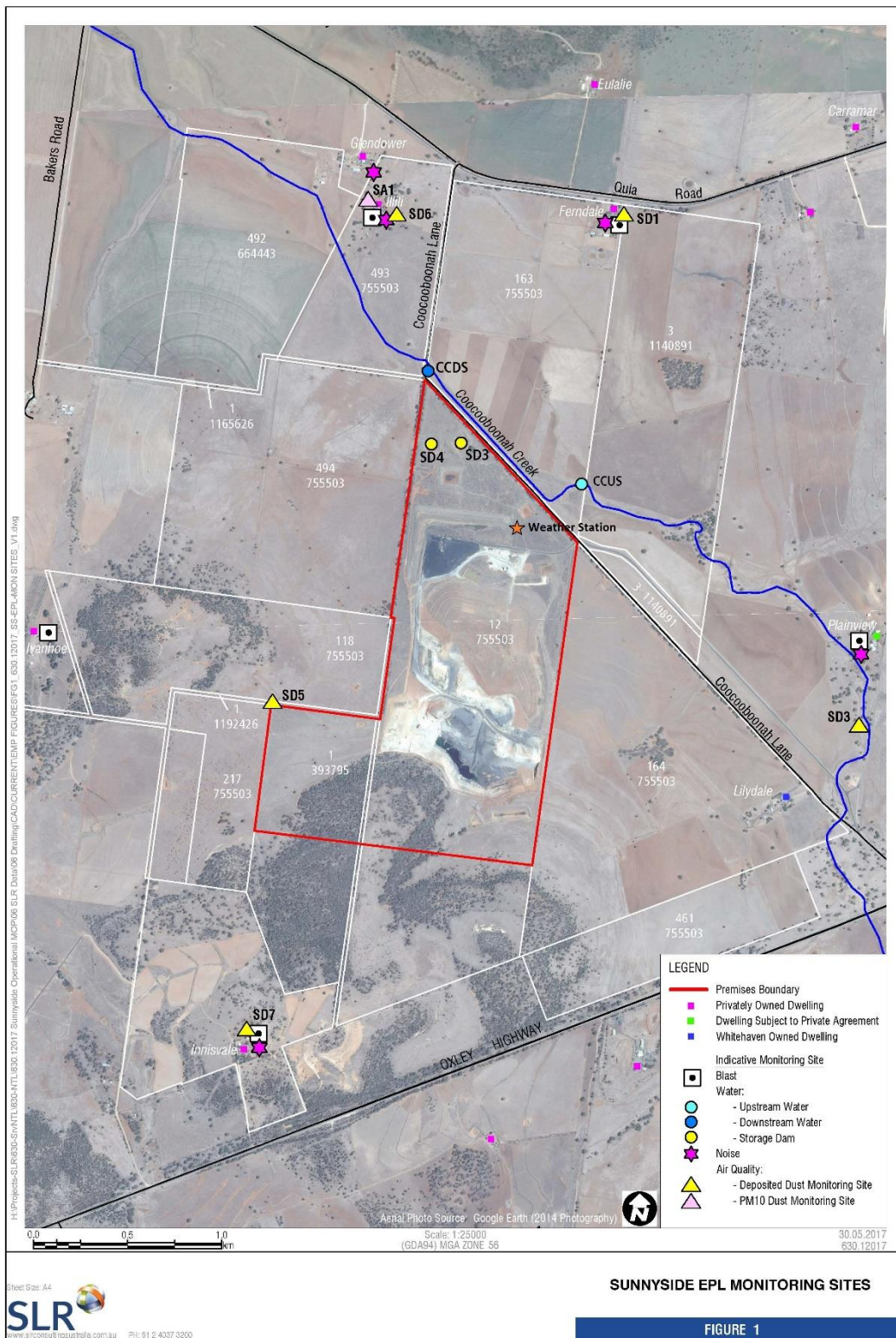
EPL ID	Date	Start Time	Measurement Period	Measured Levels – dB(A)	Measured Levels – dB(A)	Limit	Wind speed/ direction	Compliant (Yes/No)	Comments
				Leq 15min Day	Leq 15min Evening				
13						35 dB(A) Leq (15 min)			
14						35 dB(A) Leq (15 min)			
15						35 dB(A) Leq (15 min)			
16									



**SUNNYSIDE COAL MINE – MONTHLY MONITORING SUMMARY**

								Y	
17						35 dB(A) Leq (15 min)			

**Figure 1 – EPL 12957 Monitoring Locations**





## SUNNYSIDE COAL MINE – MONTHLY MONITORING SUMMARY

### Site Information

EPL No: 12957

EPA Website Link: <http://epa.nsw.gov.au/prpoeoapp/ViewPOEOLicence.aspx?DOCID=40292&SYSUID=1&LICID=12957>

Licensee: Namoi Mining Pty Ltd

Licensee Address: Sunnyside Coal Project, 259 Coocooboona Lane, GUNNEDAH NSW 2380

EPL Monitoring Points: See Figure 1 below

Sampling Period: December 2019

Obtained Date: 20 January 2020

Publication Date: 20 January 2020

Table 1 - No Pollutant Limits Apply

EPL ID	Pollutant	Units of Measure	Monitoring Frequency	No. of Samples for the Month	Date(s) Sampled	Date(s) Obtained	Min Value	Mean Value	Median Value	Max or Only Value
1	Particulates-Deposited Matter	g/m <sup>2</sup> /month	Continuous	1	19/12/19	31/12/19	-	-	-	0.6
2	Particulates-Deposited Matter	g/m <sup>2</sup> /month	Continuous	1	19/12/19	31/12/19	-	-	-	1.4
4	Particulates-Deposited Matter	g/m <sup>2</sup> /month	Continuous	1	19/12/19	31/12/19	-	-	-	0.7
5	Particulates-Deposited Matter	g/m <sup>2</sup> /month	Continuous	1	19/12/19	31/12/19	-	-	-	2.6
6	Particulates-Deposited Matter	g/m <sup>2</sup> /month	Continuous	1	19/12/19	31/12/19	-	-	-	0.6
7	PM <sub>10</sub>	µg/m <sup>3</sup>	Every 6 days	5	Various	10/01/2020	35.8	87.5	62.4	183
9	Conductivity	µS/cm	Special Frequency 1*	0	-	-	-	-	-	-
	Total organic carbon	mg/L					-	-	-	-
10	Conductivity	µS/cm		-	-	-	-	-	-	-

## SUNNYSIDE COAL MINE – MONTHLY MONITORING SUMMARY

EPL ID	Pollutant	Units of Measure	Monitoring Frequency	No. of Samples for the Month	Date(s) Sampled	Date(s) Obtained	Min Value	Mean Value	Median Value	Max or Only Value
	Total organic carbon	mg/L	Special Frequency 1*				-	-	-	-
11	TSS	mg/L	Special Frequency 2**	-			-	-	-	-
	Conductivity	µS/cm		-			-	-	-	
	Oil & Grease	mg/L		-			-	-	-	
	pH	pH		-			-	-	-	
	Total organic carbon	mg/L		-			-	-	-	
12	TSS	mg/L	Special Frequency 2**	-			-	-	-	-
	Conductivity	µS/cm		-			-	-	-	
	Oil & Grease	mg/L		-			-	-	-	
	pH	pH		-			-	-	-	
	Total organic carbon	mg/L		-			-	-	-	

**Table 2 - Pollutant Limits Apply**

EPL ID	Pollutant	Units of Measure	Monitoring Frequency	No. of Samples for the Month	Date Sampled	Date Obtained	Min Value	Max Value	100%ile Limit	Exceedance (Yes/No)	Comments
9	TSS	mg/L	Special Frequency 1*	0	-	-	-	-	50	-	No discharge
	Oil & Grease	mg/L		0			-	-	10	-	No discharge
	pH	pH		0			-	-	6.5-8.5	-	No discharge
10	TSS	mg/L	Special Frequency 1*	0	-	-	-	-	50	-	No discharge
	Oil & Grease	mg/L		0			-	-	10	-	No discharge
	pH	pH		0			-	-	6.5-8.5	-	No discharge

\* Special Frequency 1 means the collection of samples as soon as practicable after each discharge commences and in any case not more than 12 hours after each discharge commences.

## SUNNYSIDE COAL MINE – MONTHLY MONITORING SUMMARY

\*\* Special Frequency 2 means collection of samples quarterly (in the event of flow during the quarter) at a time when there is flow and as soon as practicable after each wet weather discharge from points 9 and 10 commences and in any case not more than 12 hours after each discharge commences.

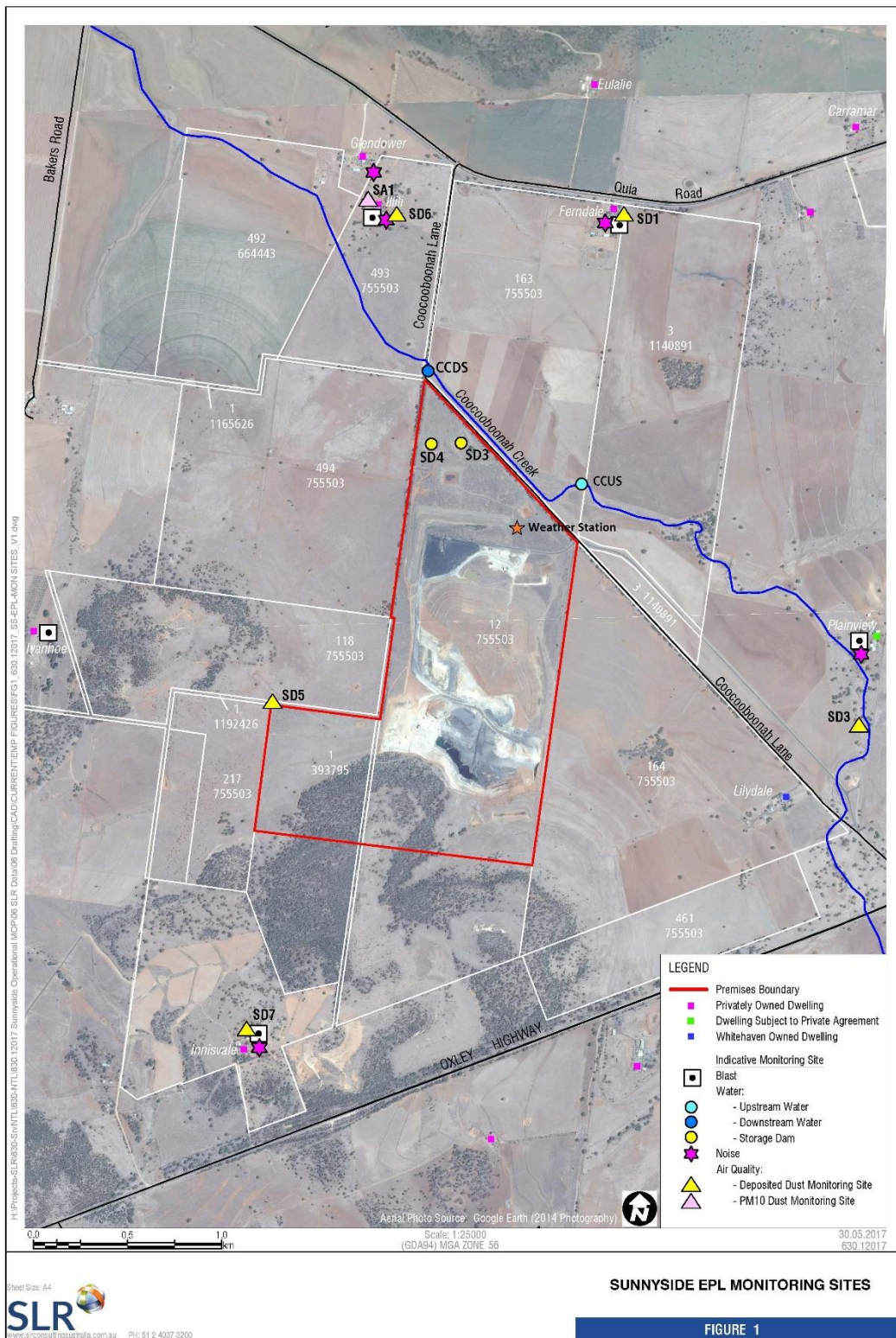
**Table 3- Noise Monitoring (Noise limits apply)**

EPL ID	Date	Start Time	Measurement Period	Measured Levels – dB(A)	Measured Levels – dB(A)	Limit	Wind speed/ direction	Compliant (Yes/No)	Comments
				Leq 15min Day	Leq 15min Evening				
13	16/12/2019	11:28	Day	<30		35 dB(A) Leq (15 min)	167°, 2.8m/s	Y	No evening operations for all days
		18:53	Evening		I/A		151°, 4.1m/s	Y	
	17/12/2019	10:35	Day	32			121 3m/s	Y	
		19:32	Evening		I/A		125°, 4.5m/s	Y	
	18/12/2019	10:35	Day	<30			113° 1.6m/s	Y	
		20:54	Evening		I/A		112°, 1m/s	Y	
14	16/12/2019	11:11	Day	<30		35 dB(A) Leq (15 min)	196°, 2.8m/s	Y	
		18:49	Evening		I/A		156°, 4.6m/s	Y	
	17/12/2019	10:17	Day	<30			89°, 2.9m/s	Y	
		19:22	Evening		I/A		129°, 4.6m/s	Y	
	18/12/2019	10:37	Day	<30			91°, 1.9m/s	Y	
		20:44	Evening		I/A		113°, 1m/s	Y	
15	16/12/2019	09:29	Day	<30		35 dB(A) Leq (15 min)	149°, 1.6m/s	Y	
		19:30	Evening		I/A		126°, 7m/s	Y	
	17/12/2019	08:35	Day	<30			112°, 2.6m/s	Y	
		18:37	Evening		I/A		137°, 5.1m/s	Y	
	18/12/2019	08:36	Day	<25			79°, 2.2m/s	Y	
		20:03	Evening		I/A		144°, 0.9m/s	Y	

## SUNNYSIDE COAL MINE – MONTHLY MONITORING SUMMARY

16	16/12/2019	09:41	Day	I/A		35 dB(A) Leq (15 min)	189°, 3.3m/s	Y	
		19:40	Evening		I/A		127°, 6.2m/s	Y	
	17/12/2019	08:48	Day	I/A			102°, 2.3m/s	Y	
		18:49	Evening		I/A		132°, 4.6m/s	Y	
	18/12/2019	08:51	Day	<30			78°, 3m/s	Y	
		20:07	Evening		I/A		-,0m/s	Y	
17	16/12/2019	09:29	Day	I/A		40 dB(A) Leq (15 min)	184°, 3.9m/s	Y	
		18:05	Evening		I/A		182°, 3.9m/s	Y	
	17/12/2019	12:18	Day	<35			136°, 2.96m/s	Y	
		20:11	Evening		I/A		128°, 4.5m/s	Y	
	18/12/2019	12:28	Day	35			252°, 0.5m/s	Y	
		21:35	Evening		I/A		0m/s	Y	

Figure 1 – EPL 12957 Monitoring Locations





EPL MONTHLY MONITORING REPORTS  
2019 CORRECTION LOG

Month of EPL Report	Date of Original Publishing	Date of Correction	Date of Republishing	Correction/s made
September 2019	15/10/2019	1/09/2022	1/09/2022	<ul style="list-style-type: none"> <li>• Changed No. of Samples for the Month value in Table 1 for EPL ID 9 (original data: 1 corrected data: 0)</li> <li>• Added Noise monitoring data in Table 3 for EPL ID 13, 14, 15, 16, and 17.</li> </ul>
October 2019	15/11/2019	1/09/2022	1/09/2022	<ul style="list-style-type: none"> <li>• Changed sampling period (original data: August 2019 corrected data: October 2019).</li> <li>• Changed Obtained date (original data: 11 October 2019 corrected data: 11th November 2019).</li> <li>• Changed Publication date (original data: 15 October 2019 corrected data: 15th November 2019).</li> <li>• Changed date(s) sampled value in Table 1 for EPL ID 1,2,4,5 and 6 (original data: 19/09/2019 corrected data: 21/10/2019).</li> <li>• Changed date(s) obtained value in Table 1 for EPL ID 1,2,4,5 and 6 (original data: 04/10/2019 corrected data: 04/11/2019).</li> <li>• Changed Max or Only Value data in Table 1 for EPL ID 1 (original data: 2.5 corrected data: 1.8)</li> <li>• Changed Max or Only Value data in Table 1 for EPL ID 2 (original data: 1.3 corrected data: 5.8)</li> <li>• Changed Max or Only Value data in Table 1 for EPL ID 4 (original data: 1.0 corrected data: 1.8)</li> <li>• Changed Max or Only Value data in Table 1 for EPL ID 5 (original data: 1.4 corrected data: 1.6)</li> <li>• Changed Median Value in Table 1 for EPL ID 1,2,4,5 and 6 (original data: Dust results under review, possible lab error, corrected data: - )</li> <li>• Changed date(s) obtained value in Table 1 for EPL ID 7 (original data: 11/10/2019 corrected data: 15/11/2019)</li> </ul>



EPL MONTHLY MONITORING REPORTS  
**2019 CORRECTION LOG**

				<ul style="list-style-type: none"> <li>• Changed Min Value in Table 1 for EPL ID 7 (original data: 1.5 corrected data: 25.8)</li> <li>• Changed Mean Value in Table 1 for EPL ID 7 (original data: 14.26 corrected data: 71.9)</li> <li>• Changed Median Value in Table 1 for EPL ID 7 (original data:13.7 corrected data: 60.4)</li> <li>• Changed Max or Only Value in Table 1 for EPL ID 7 (original data: 46 corrected data: 146)</li> <li>• Changed No. of Samples for the Month value in Table 1 for EPL ID 9 (original data: 1 corrected data: 0)</li> <li>• Removed Noise monitoring data from Table 3 (duplicated from previous month).</li> </ul>
November 2019	18/12/2019	1/09/2022	1/09/2022	<ul style="list-style-type: none"> <li>• Changed No. of Samples for the Month value in Table 1 for EPL ID 9 (original data: 1 corrected data: 0)</li> </ul>
December 2019	20/01/2019	1/09/2022	1/09/2022	<ul style="list-style-type: none"> <li>• Changed No. of Samples for the Month value in Table 1 for EPL ID 9 (original data: 1 corrected data: 0)</li> <li>• Added noise monitoring data in Table 3 for EPL ID 16</li> </ul>